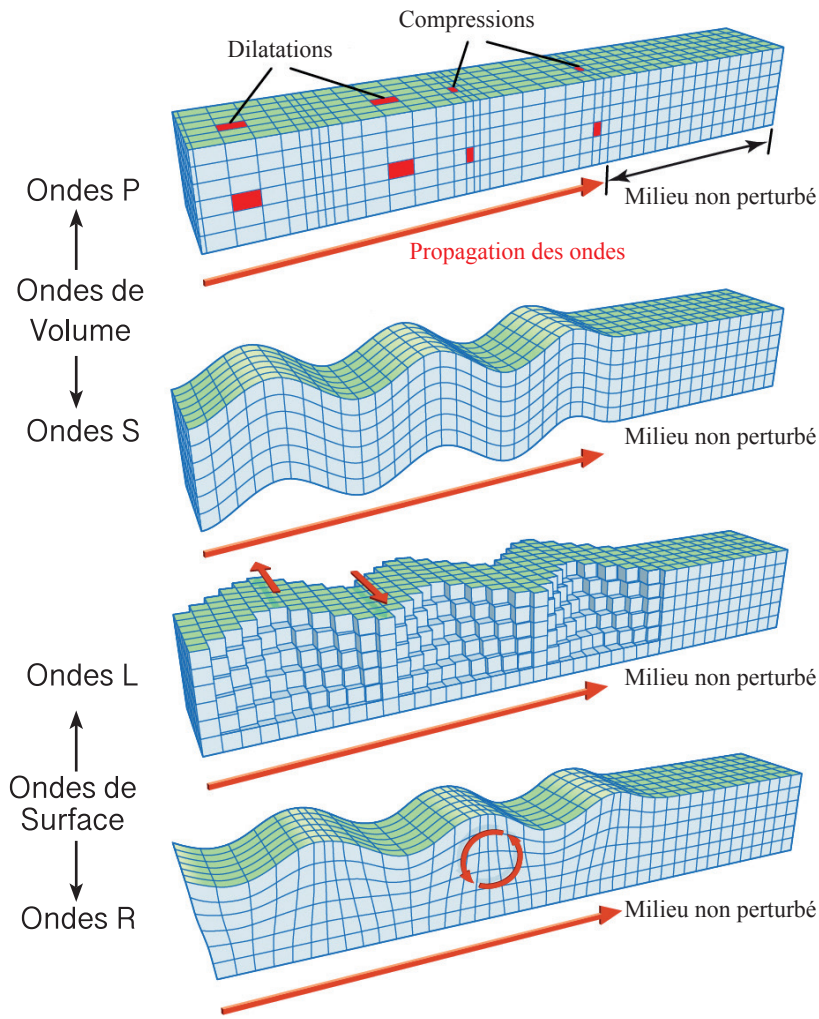
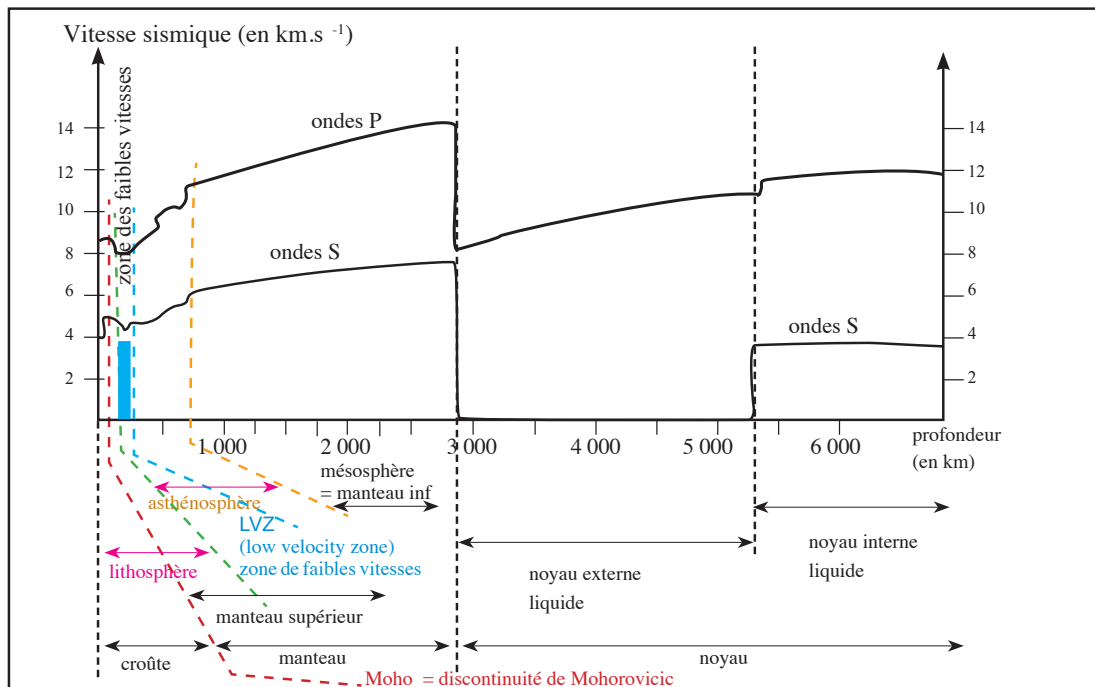


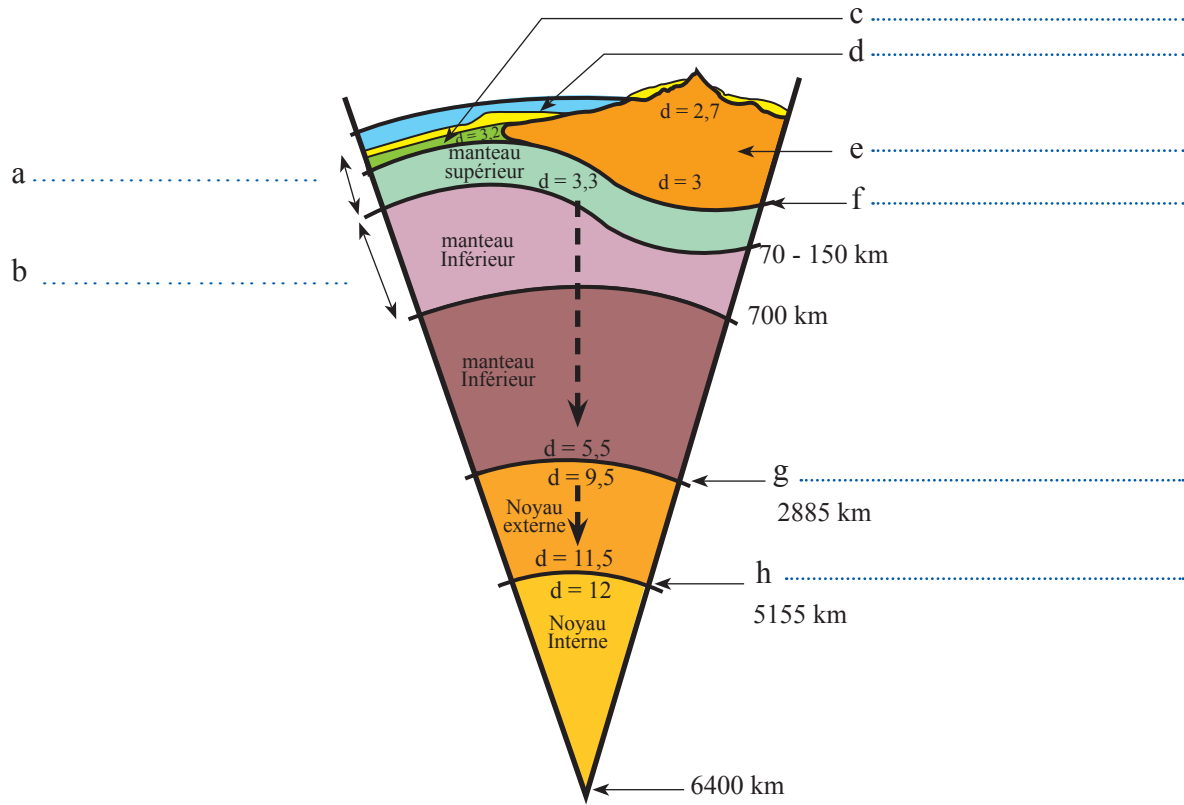
Supports de cours



Document 1 :



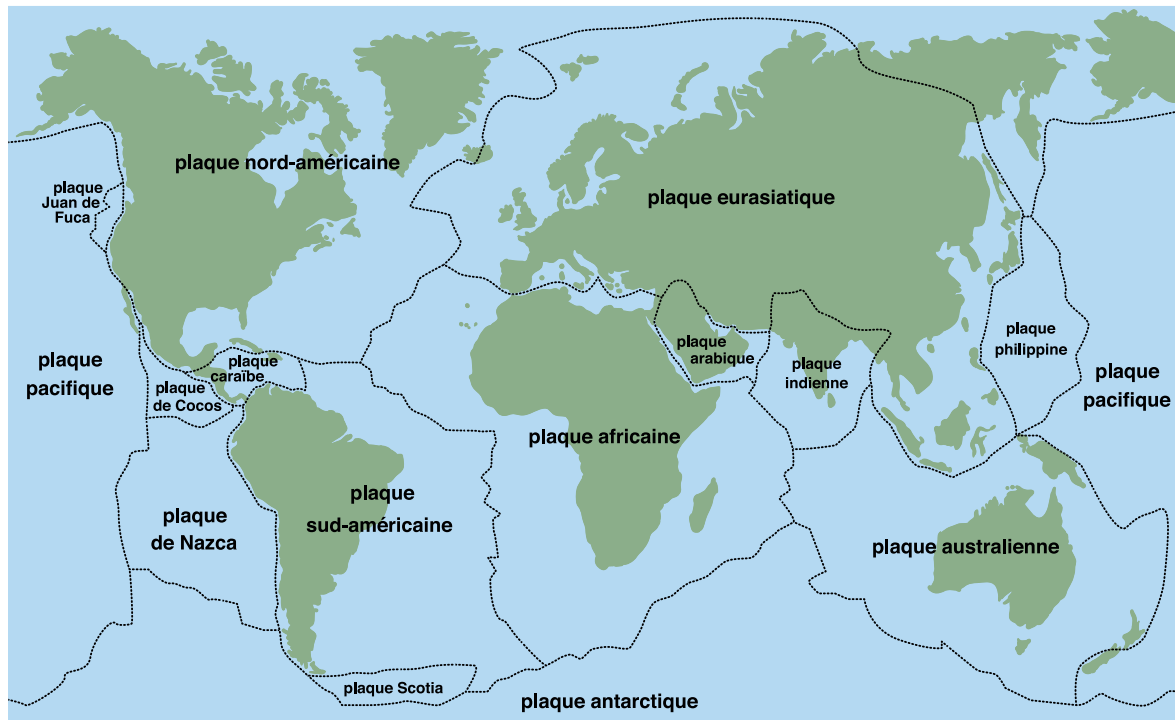
Document 2 :



Document 3 :



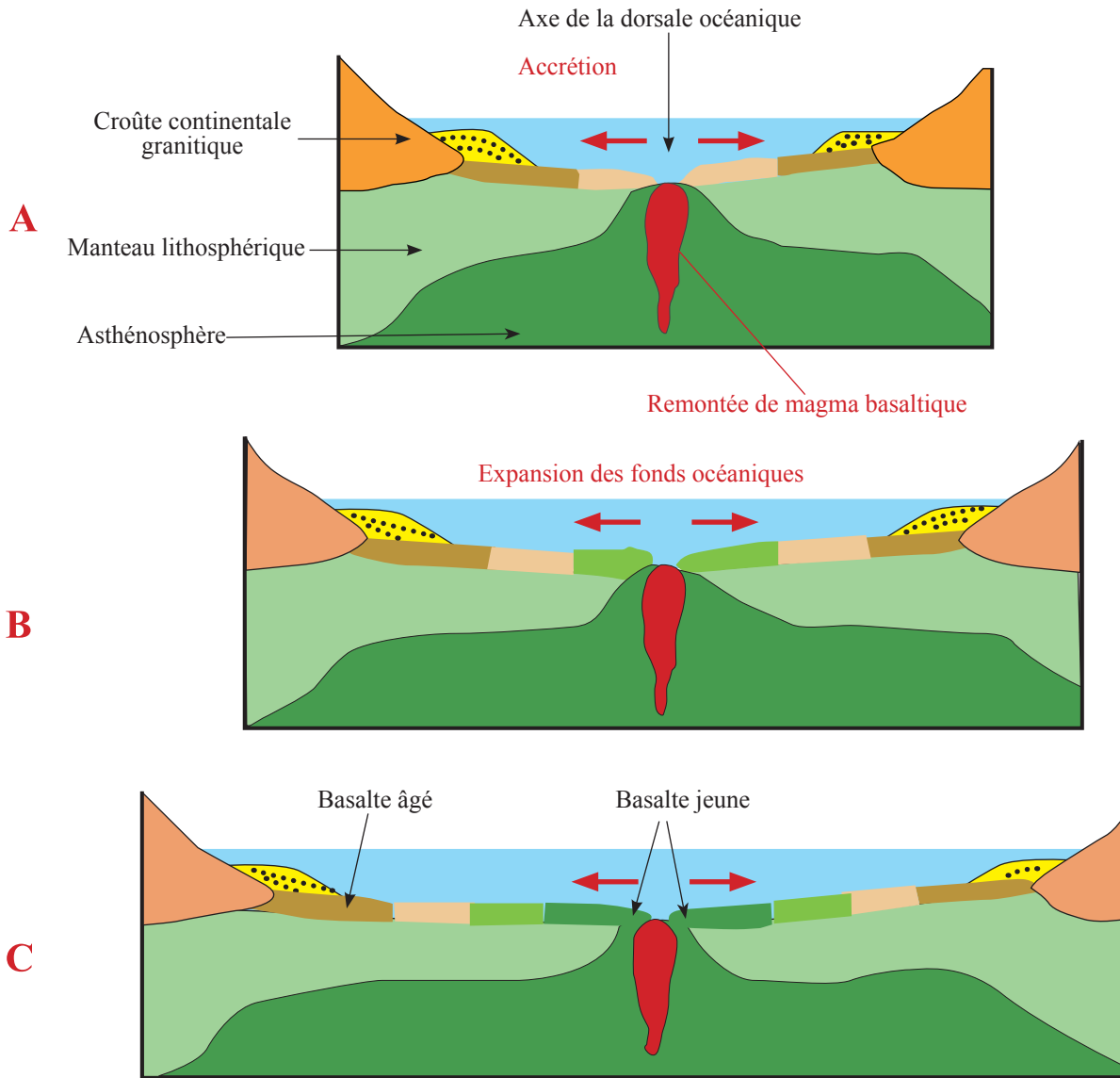
Document 4 :



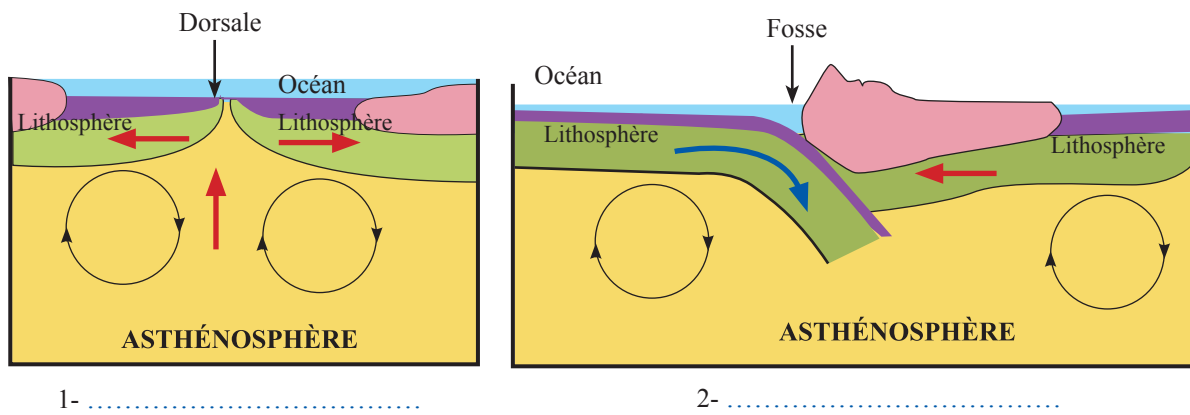
Document 5 :



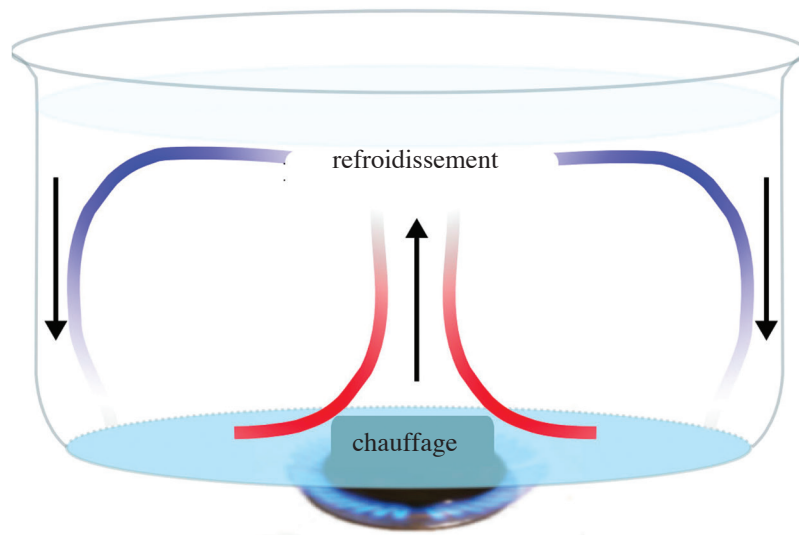
Document 6 :



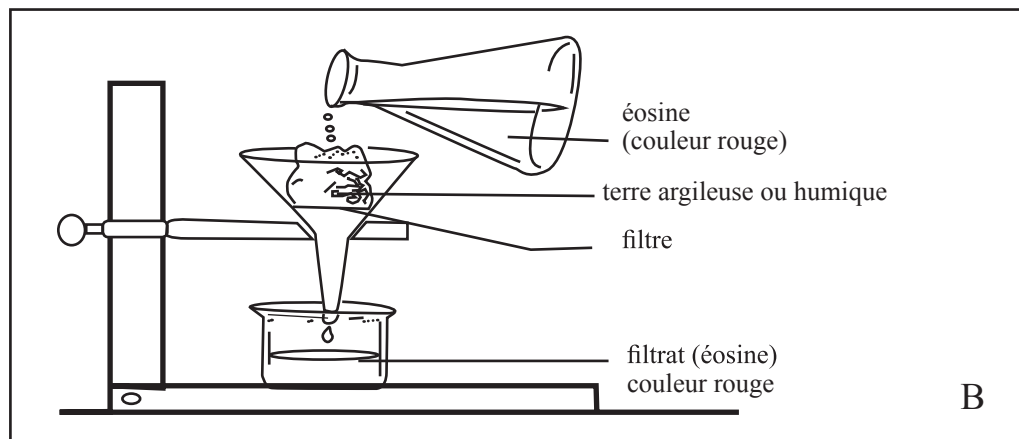
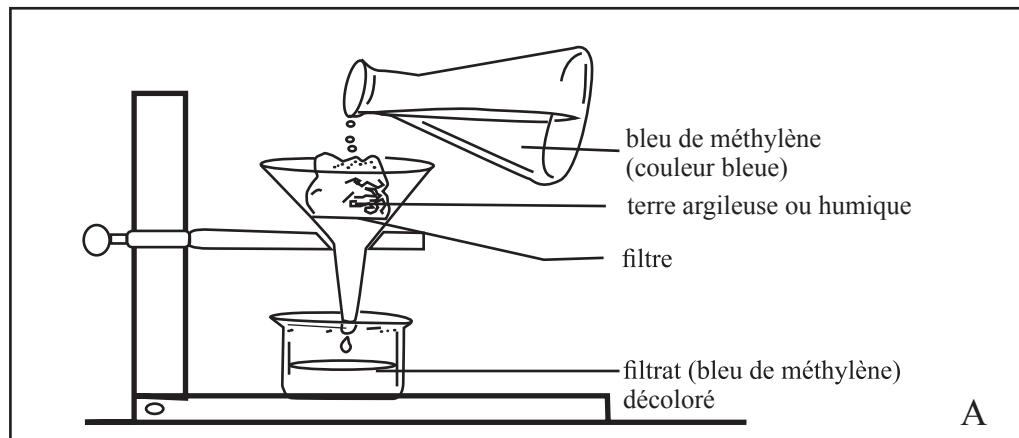
Document 7 :



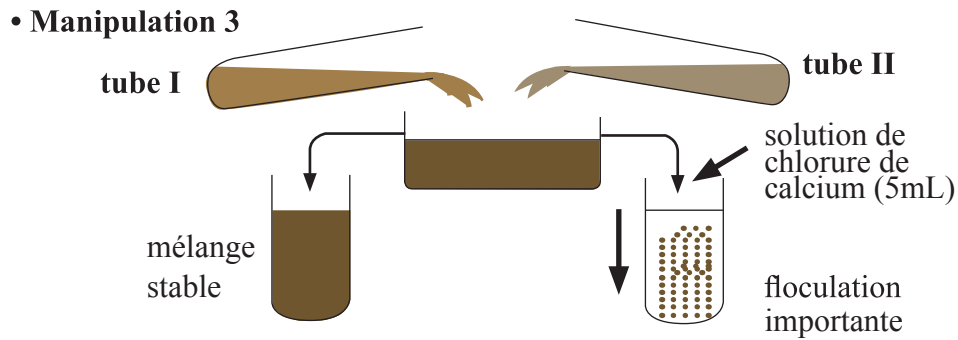
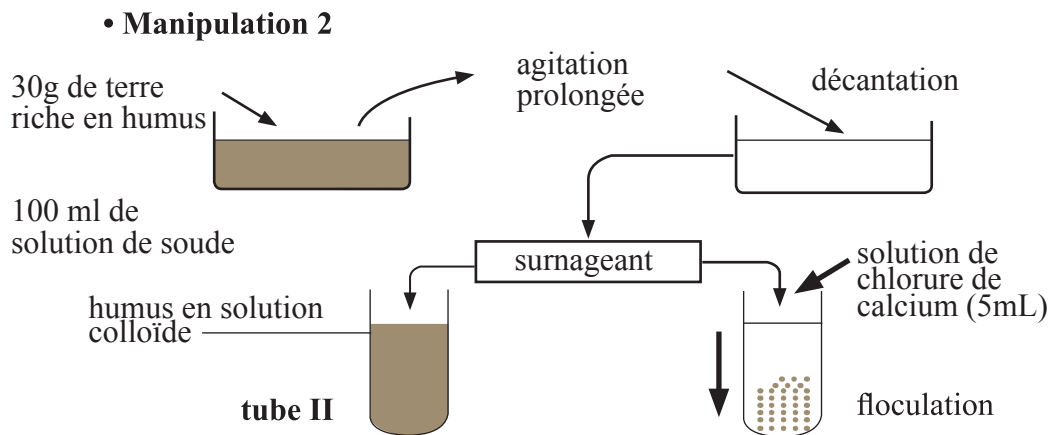
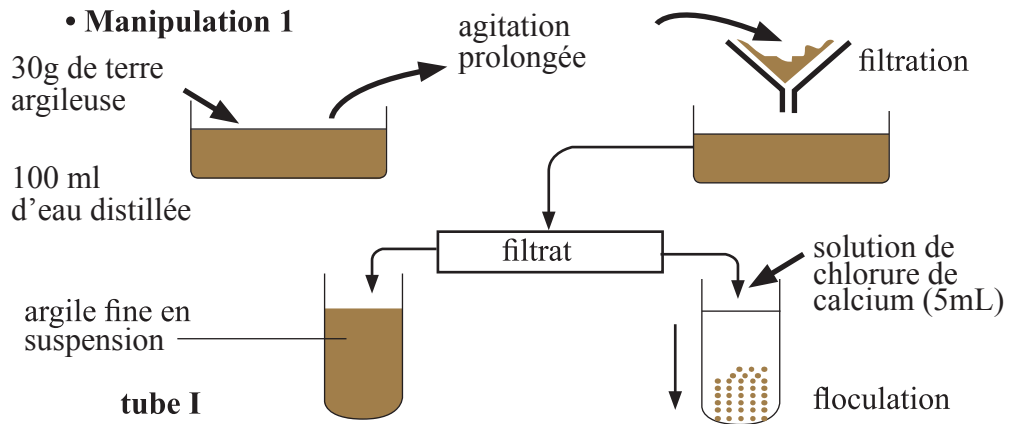
Document 8 :



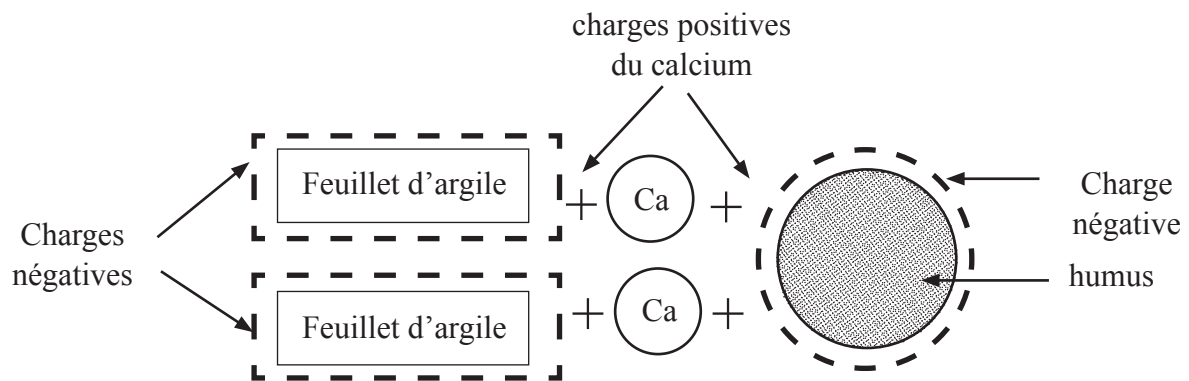
Document 9 :



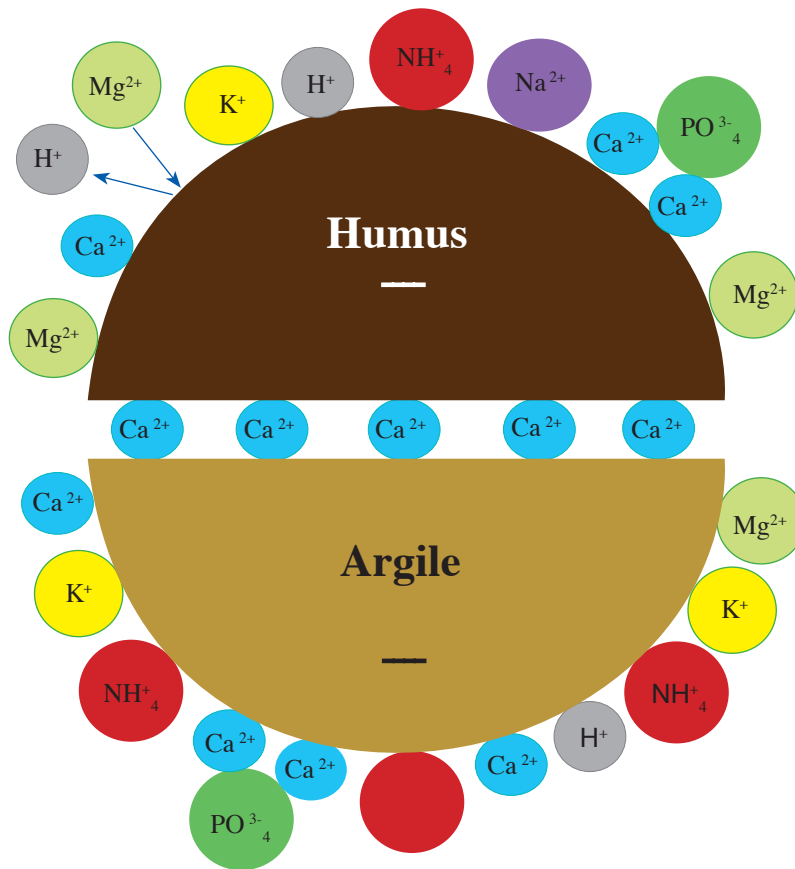
Document 10 :



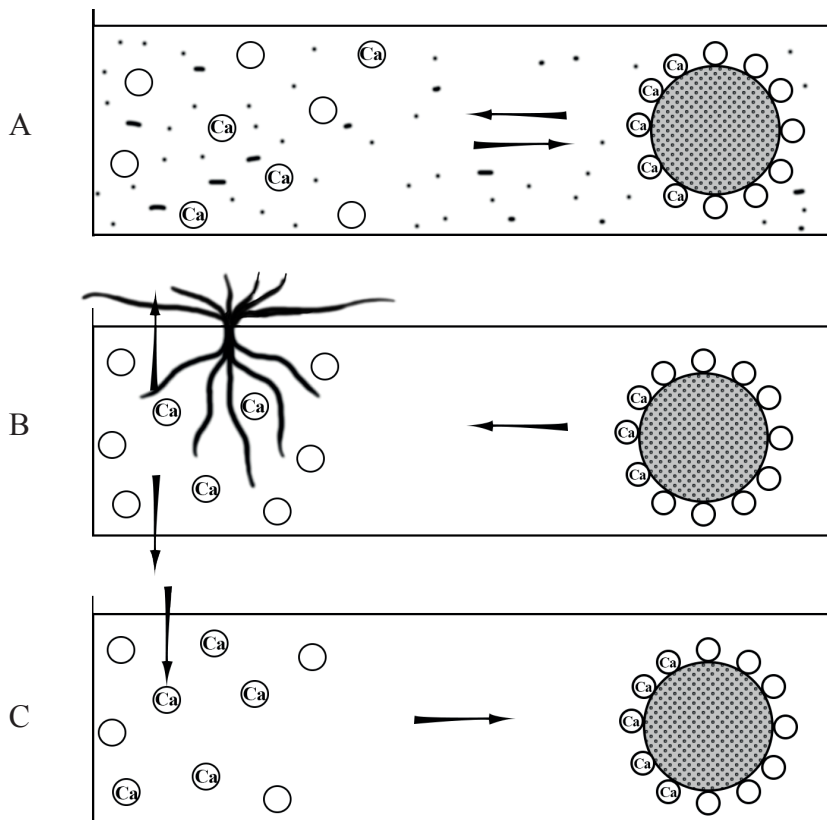
Document 11 :



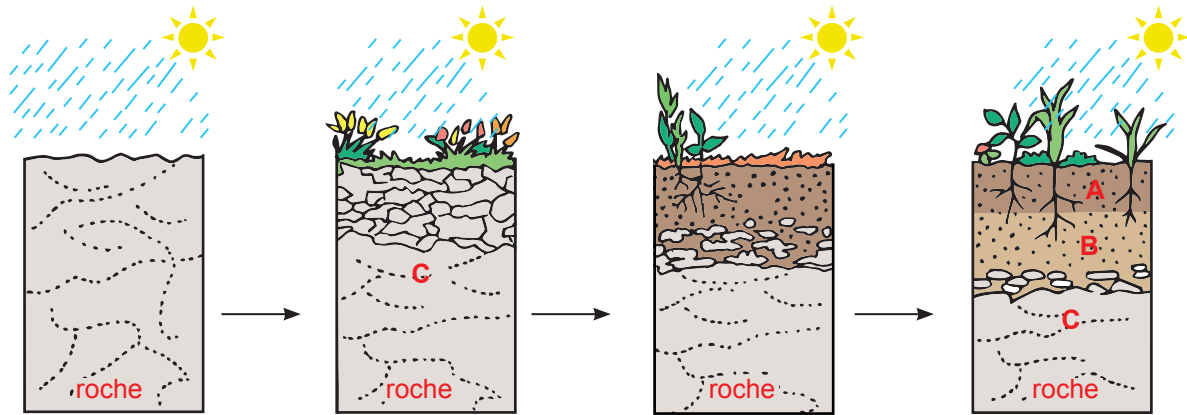
Document 12 :



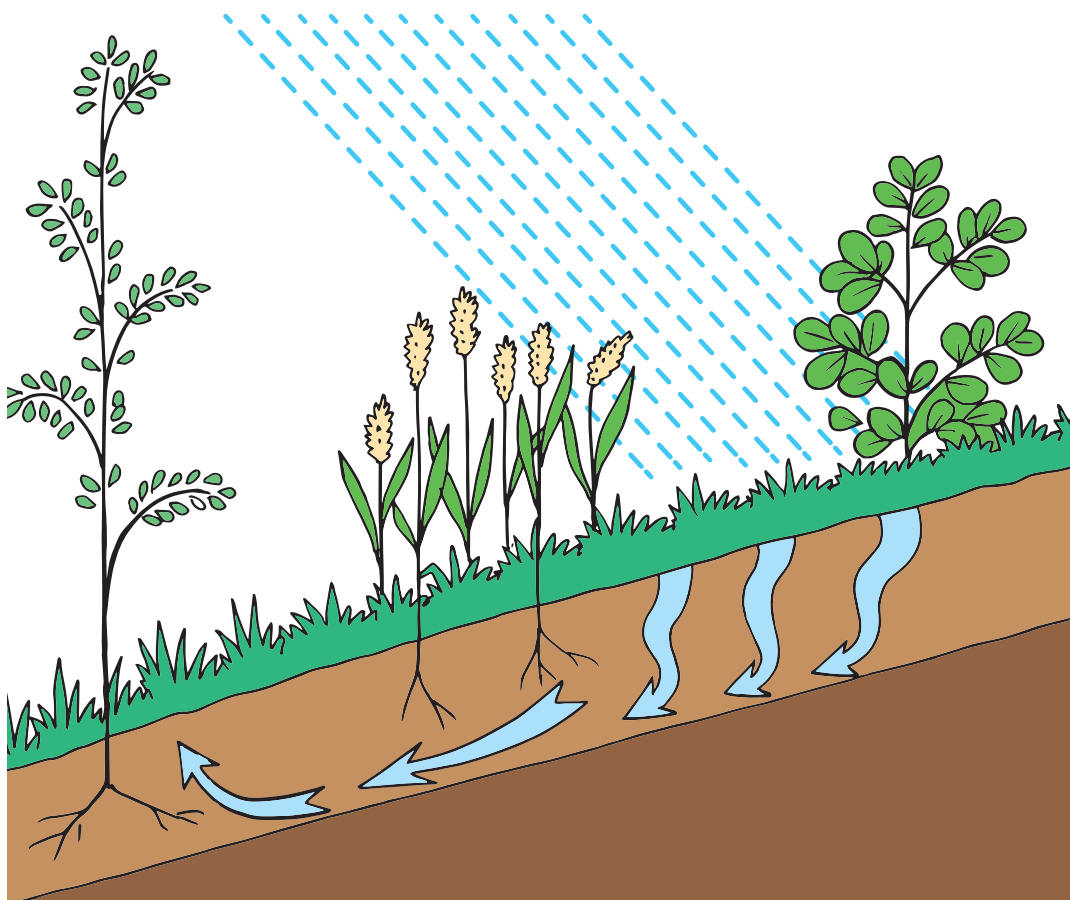
Document 13 :



Document 14 :



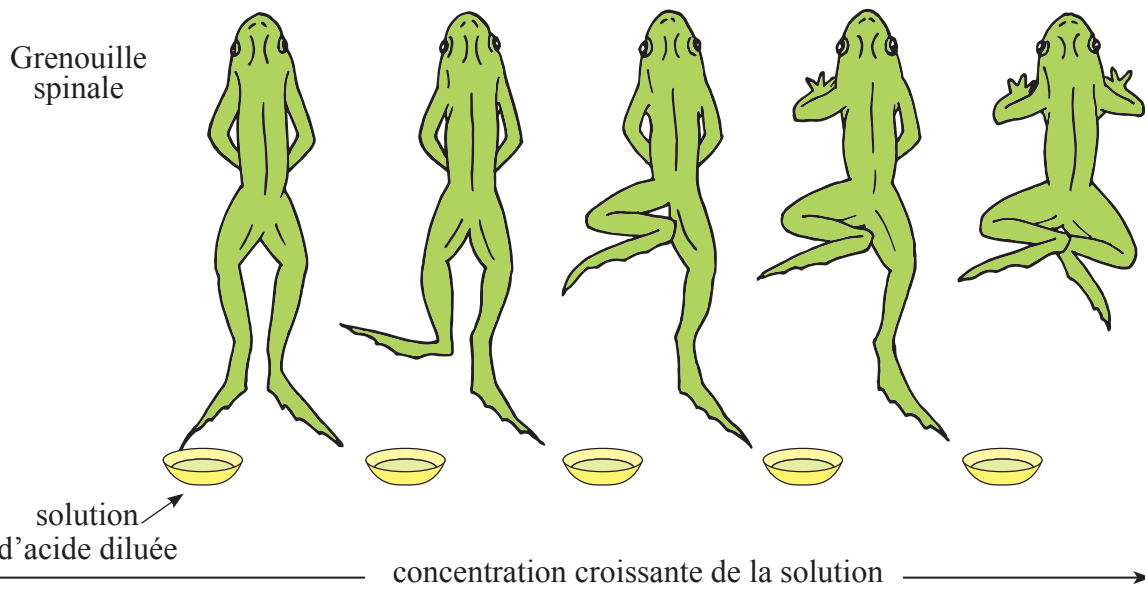
Document 15 :



Document 16 :

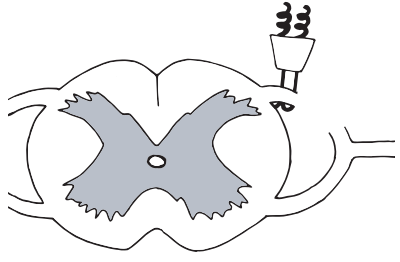
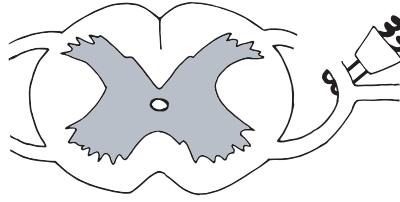
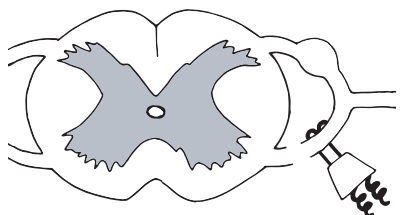


Document 17 :

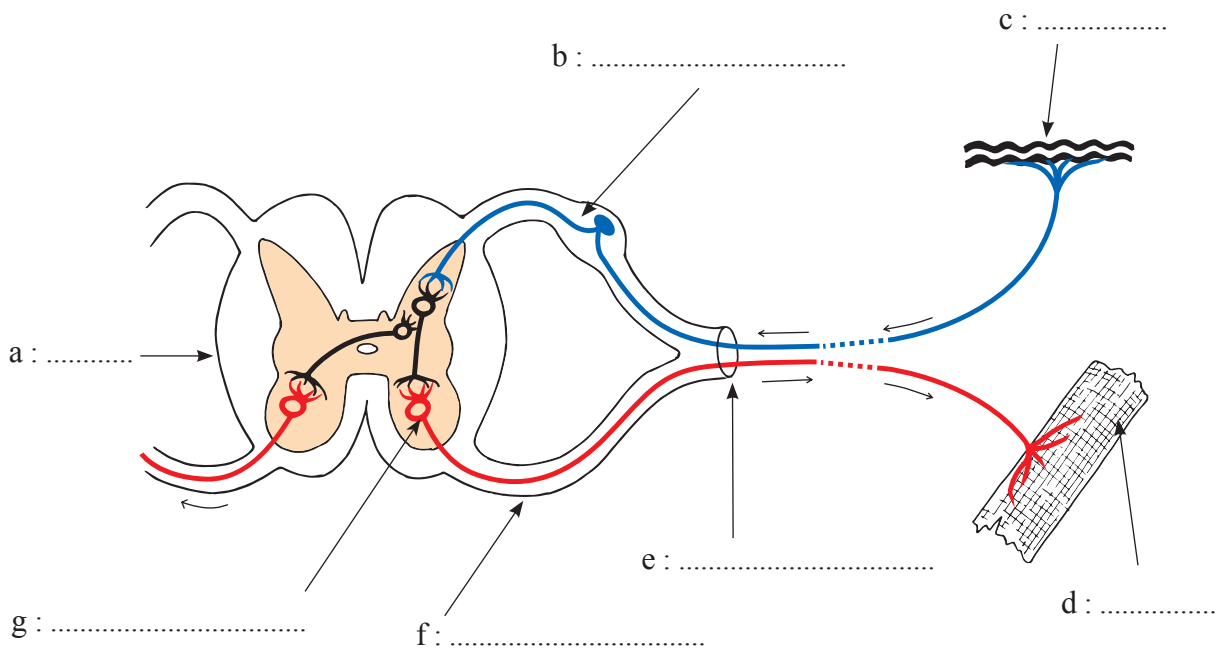


Résultats	aucune réponse	flexion de l'extrémité de la patte gauche	flexion du membre postérieur gauche	flexion des membres postérieurs	flexion des quatre membres
-----------	----------------	---	-------------------------------------	---------------------------------	----------------------------

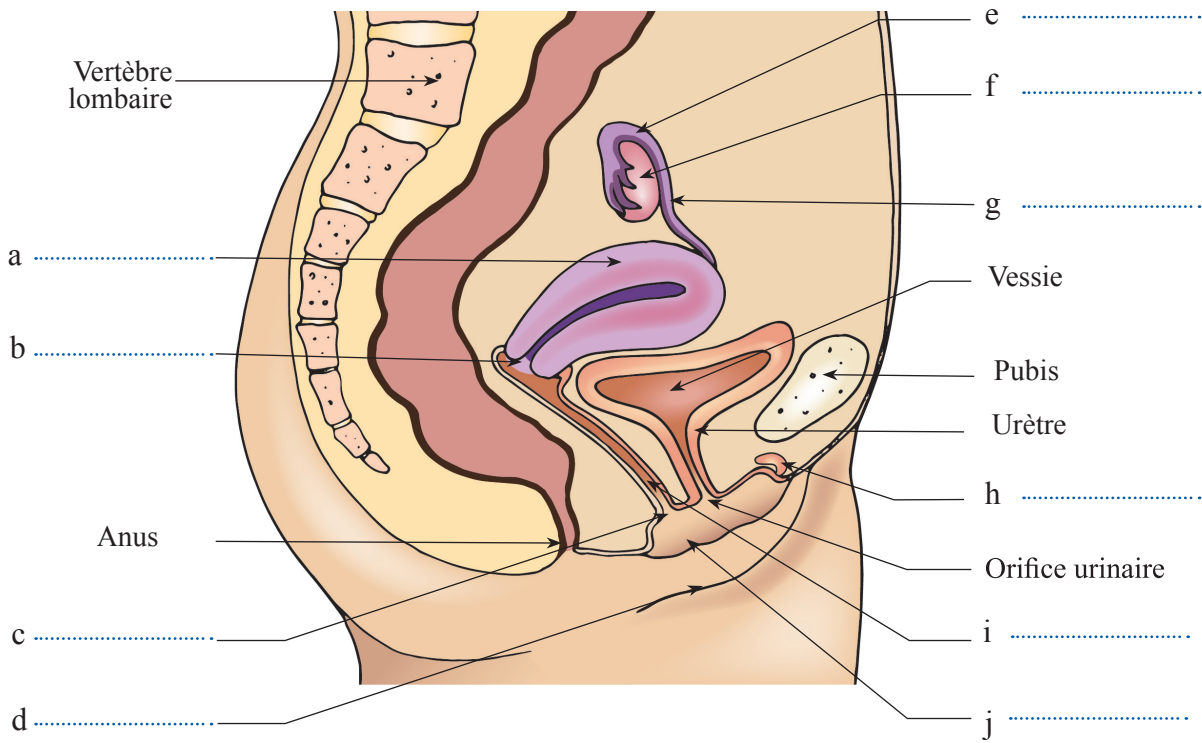
Document 18 :

	EXPÉRIENCES	RÉSULTATS
	<p>*Section de la racine postérieure du nerf rachidien.</p> <p>*Excitation du bout central</p>	Contraction du muscle du membre innervé.
	*Excitation du bout périphérique.	Aucune réaction du muscle du membre innervé.
	<p>*Section de la racine ventrale du nerf rachidien.</p> <p>*Stimulation du bout périphérique.</p>	Contraction du muscle du membre innervé.

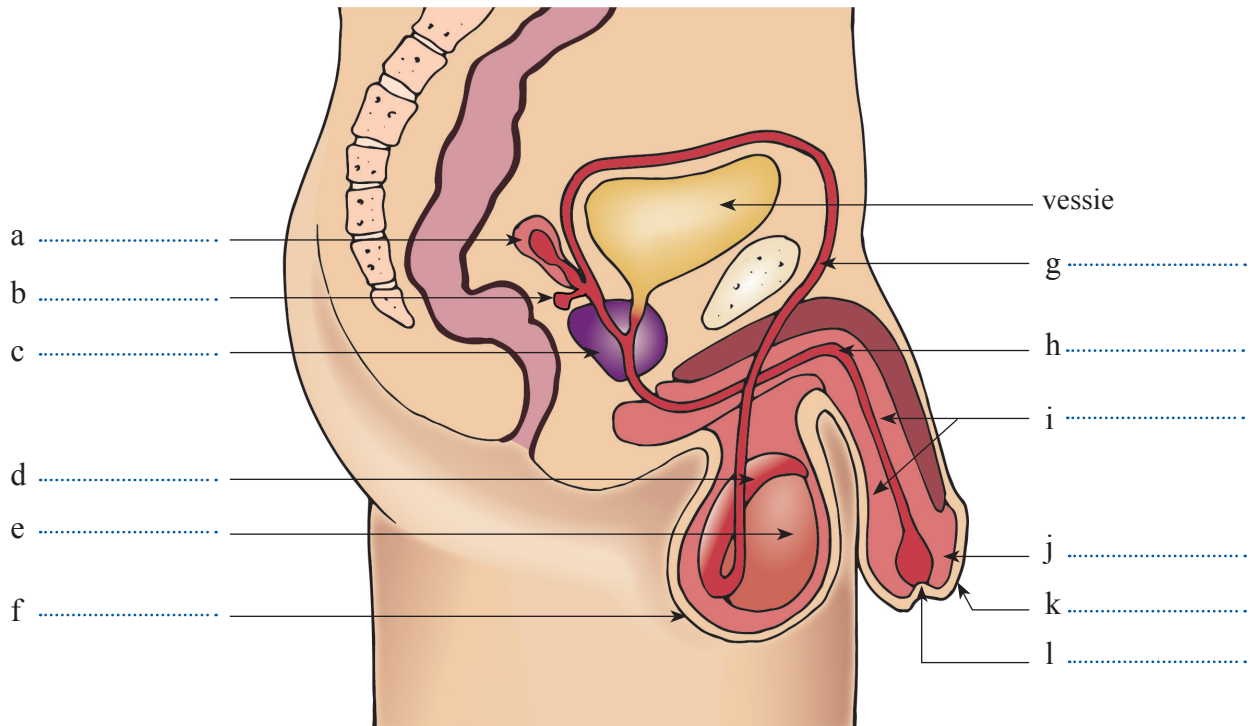
Document 19:



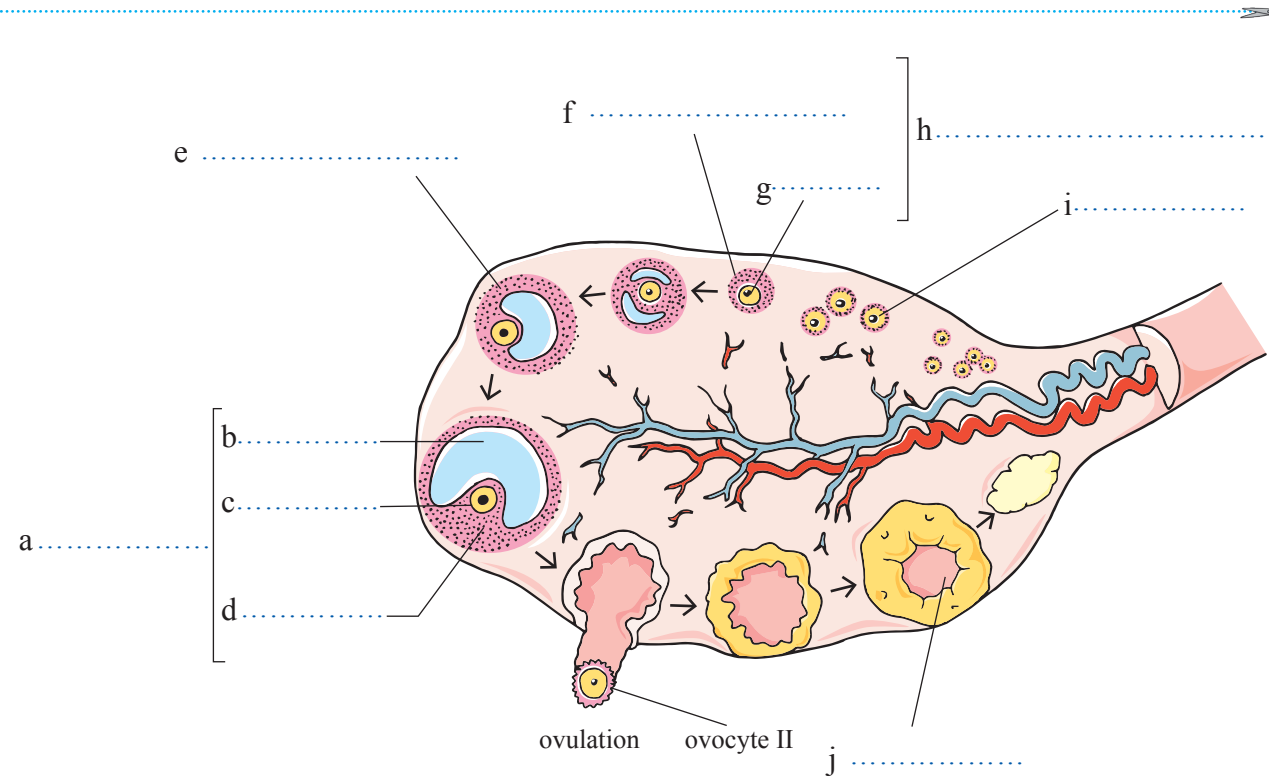
Document 20 :



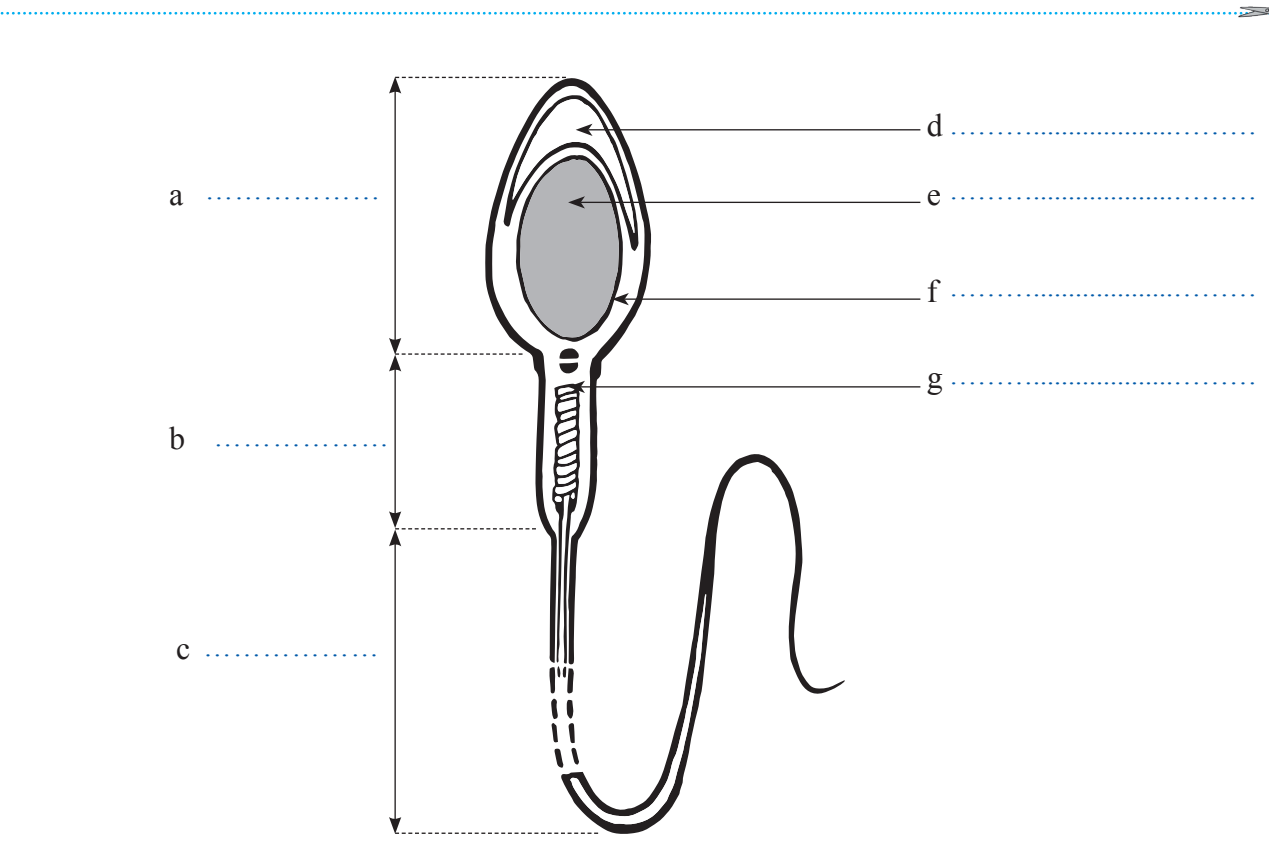
Document 21 :



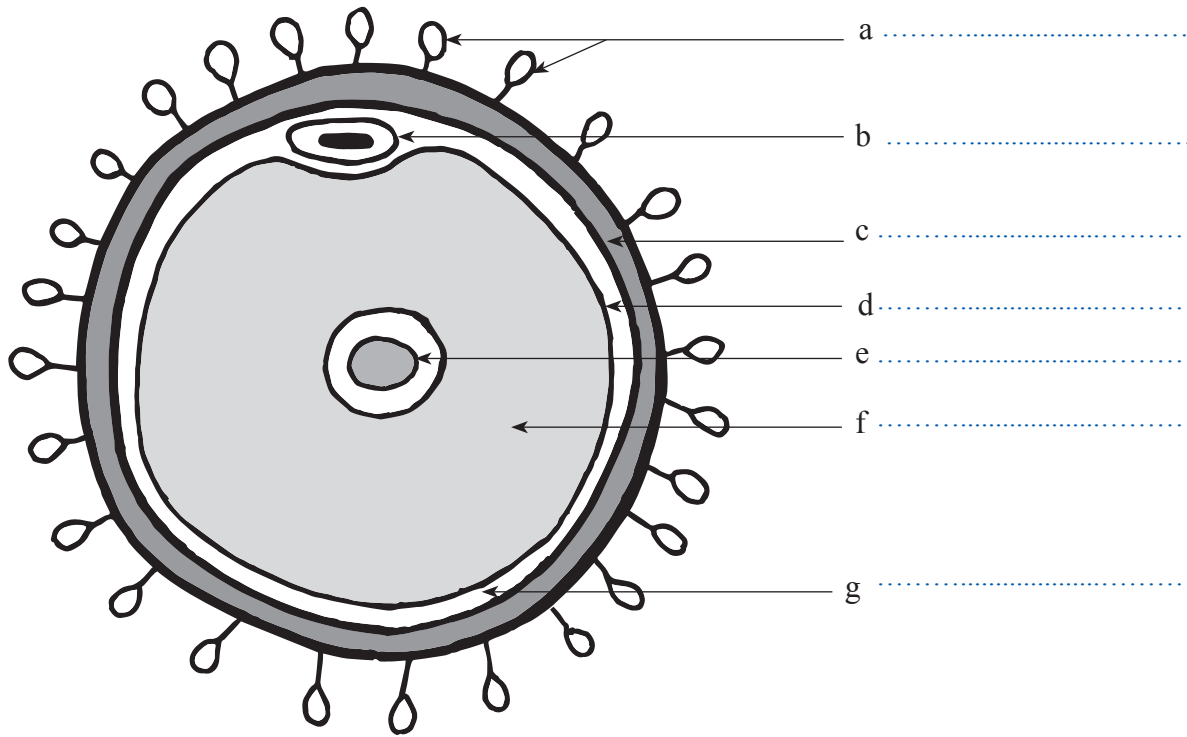
Document 22 :



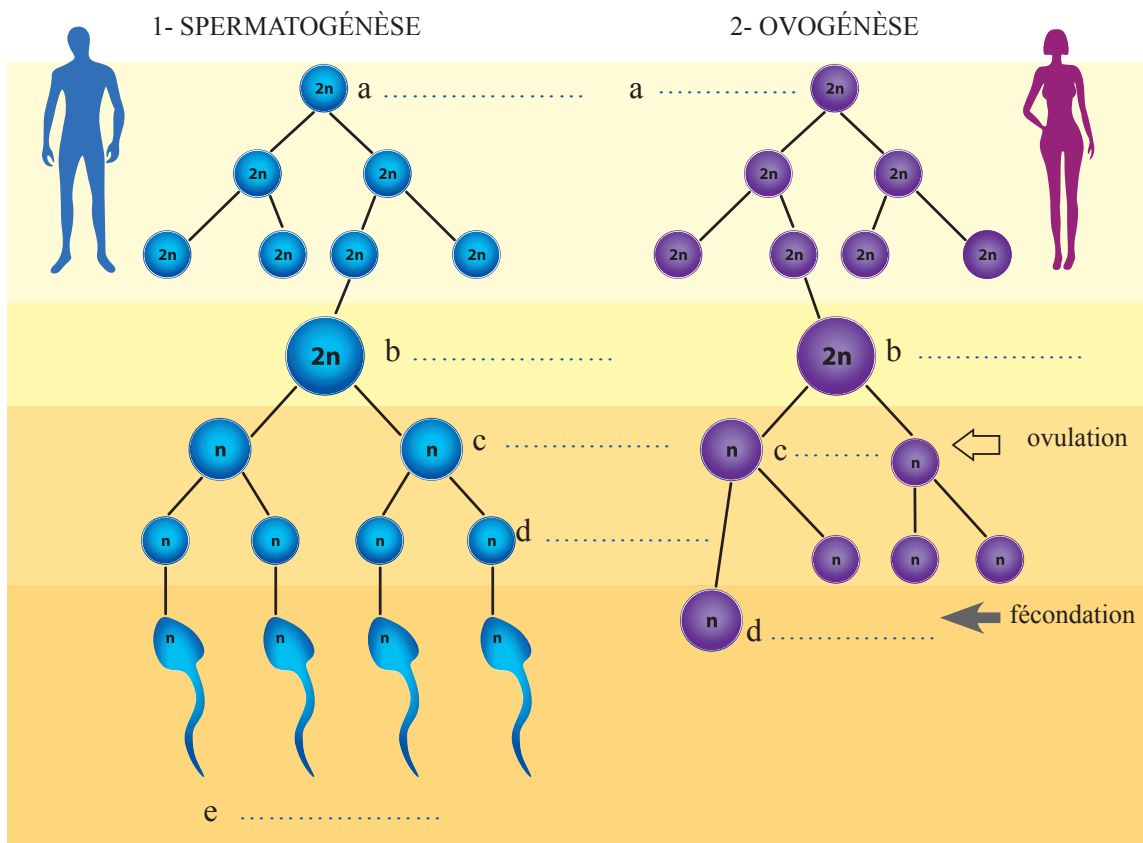
Document 23 :



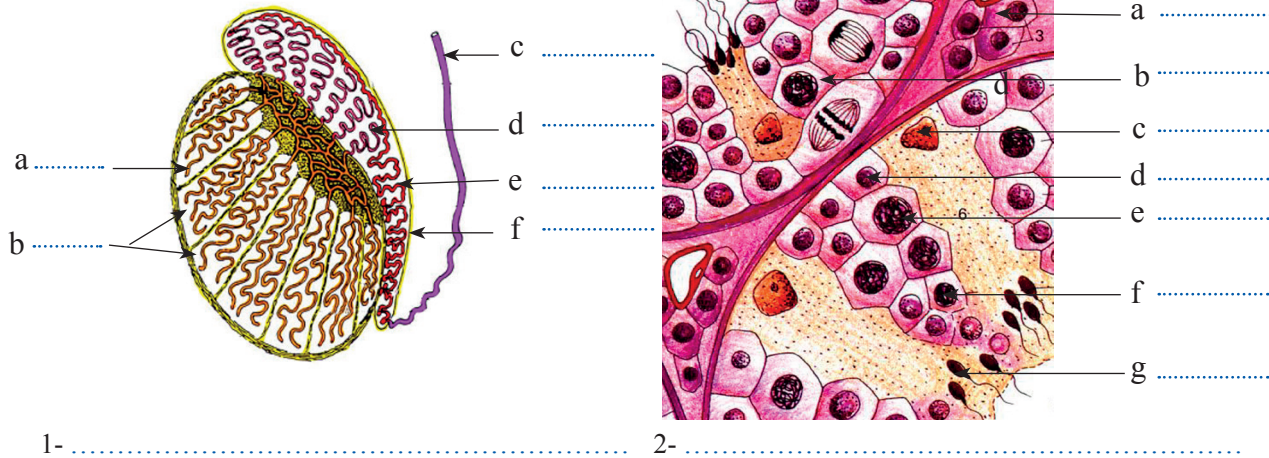
Document 24 :



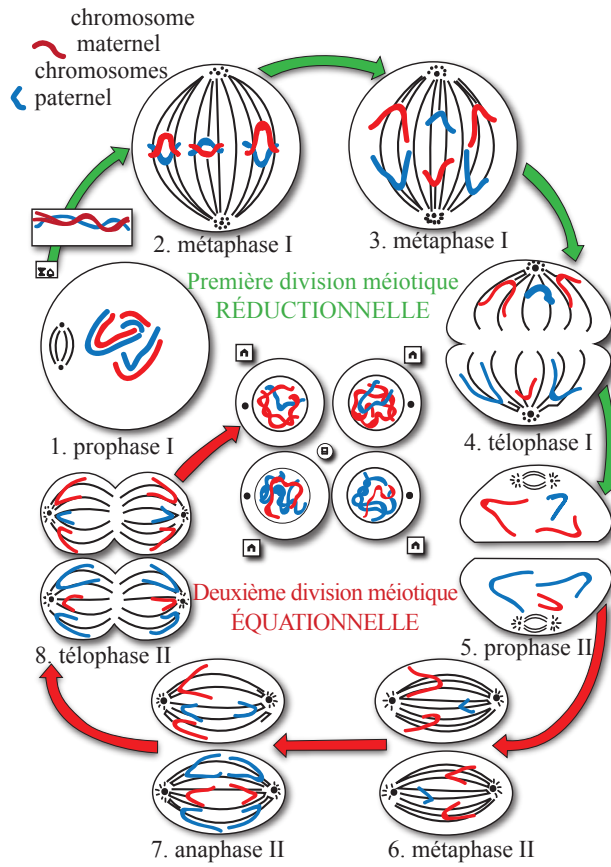
Document 25 :



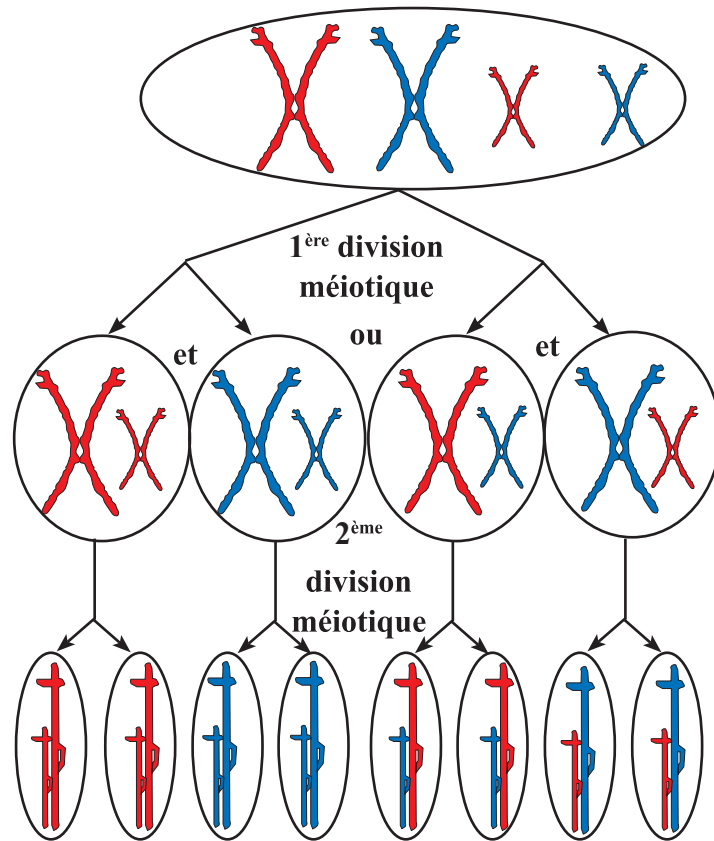
Document 26 :



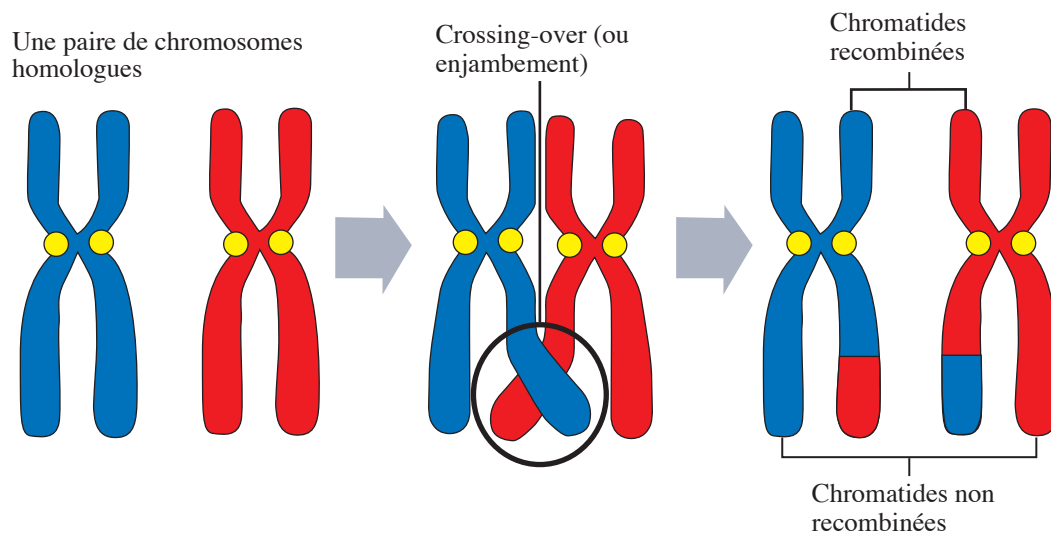
Document 27 :



Document 28 :



Document 29 :



Document 30 :

• Croisement 1

On veut connaître le mode de transmission de la couleur du pelage chez la souris.

Premier croisement

On croise une souris blanche avec une souris grise et on obtient une descendance constituée de souris grises.

Deuxième croisement

On croise ensuite deux souris grises issues du premier croisement et on obtient 54 souriceaux gris et 18 souriceaux blancs

Troisième croisement

On croise enfin une souris parente blanche avec une souris grise issue du premier croisement et on a 36 souriceaux à pelage gris et 37 souriceaux à pelage blanc.

Document 31 :

• Croisement 2

On veut connaître le mode de transmission de la couleur des fleurs chez la belle-de -nuit.

Premier croisement

On fait un croisement chez la belle-de-nuit entre une plante à fleurs rouges et une plante à fleurs blanches et on obtient des plantes à fleurs roses.

Deuxième croisement

On croise ensuite deux plantes à fleurs roses entre elles et On obtient 120 plantes à fleurs rouges, 121 plantes à fleurs blanches et 242 plantes à fleurs roses.

Document 32 :

• Croisement 3

On croise des drosophiles mâles aux yeux blancs (souche mutante) avec des drosophiles femelles aux yeux rouges (souche sauvage). On obtient en F_1 des drosophiles aux yeux rouges. On croise des drosophiles mâles aux yeux rouges avec des drosophiles femelles aux yeux blancs, toutes de race pure. On obtient en F_1 :

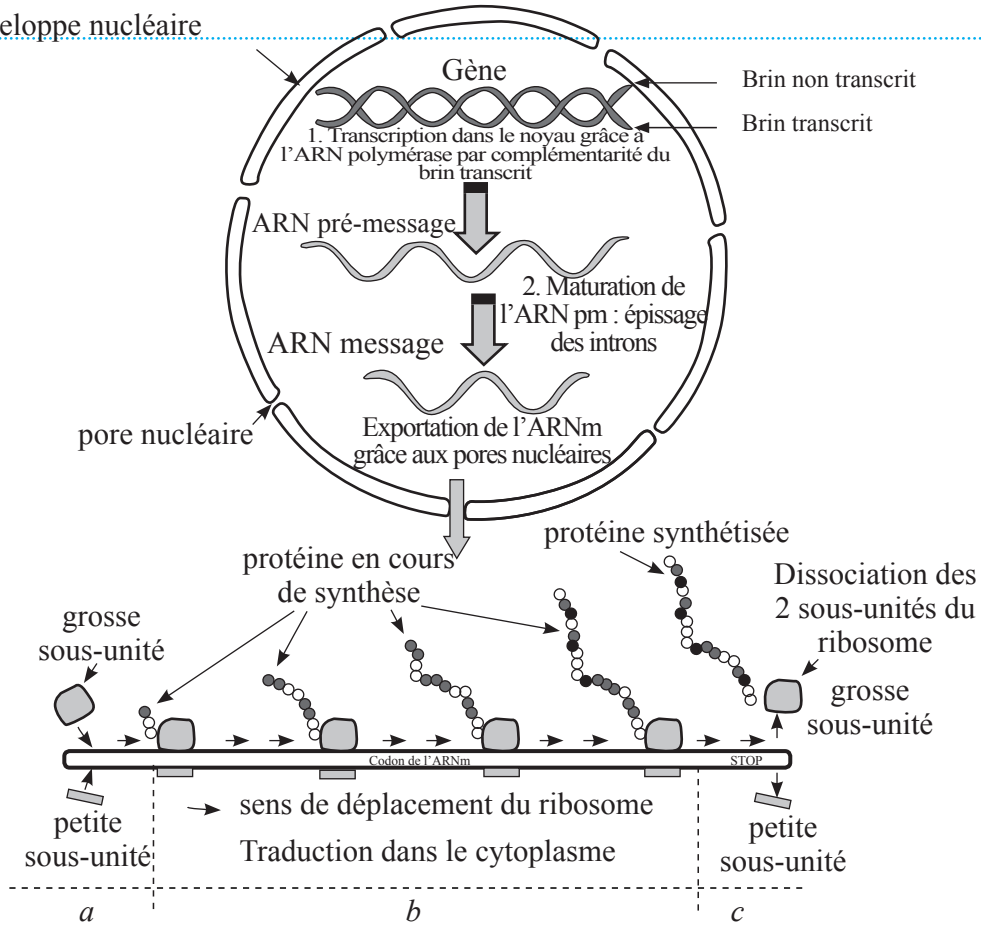
- 51 drosophiles mâles aux yeux blancs,
- 49 drosophiles femelles aux yeux rouges.

Document 33 :

		deuxième base				
		U	C	A	G	
première base	U	UUU } Phe UUC } UUA } Leu UUG }	UCU } Ser UCC } UCA } UCG }	UAU } Tyr UAC } UAA Stop UAG Stop	UGU } Tyr UGC } UGA Stop UGG Trp	U C A G
	C	CUU } Leu CUC } CUA } CUG }	CCU } Pro CCC } CCA } CCG }	CAU } His CAC } CAA } Gin CAG }	CGU } Arg CGC } CGA } CGG }	U C A G
	A	AUU } Ile AUC } AUA } AUG Met	ACU } Thr ACC } ACA } ACG }	AAU } Asn AAC } AAA } Lys AAG }	AGU } Ser AGC } AGA } Arg AGG }	U C A G
	G	GUU } Val GUC } GUA } GUG }	GCU } Ala GCC } GCA } GCG }	AUU } AUC } AUA } AUG }	GGU } Gly GGC } GGA } GGG }	U C A G
						troisième base

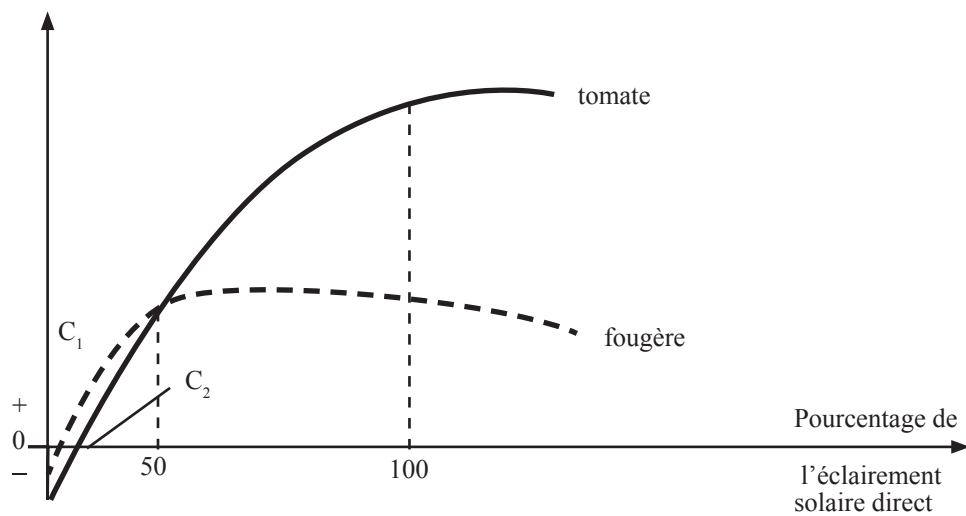
Document 34 :

Enveloppe nucléaire

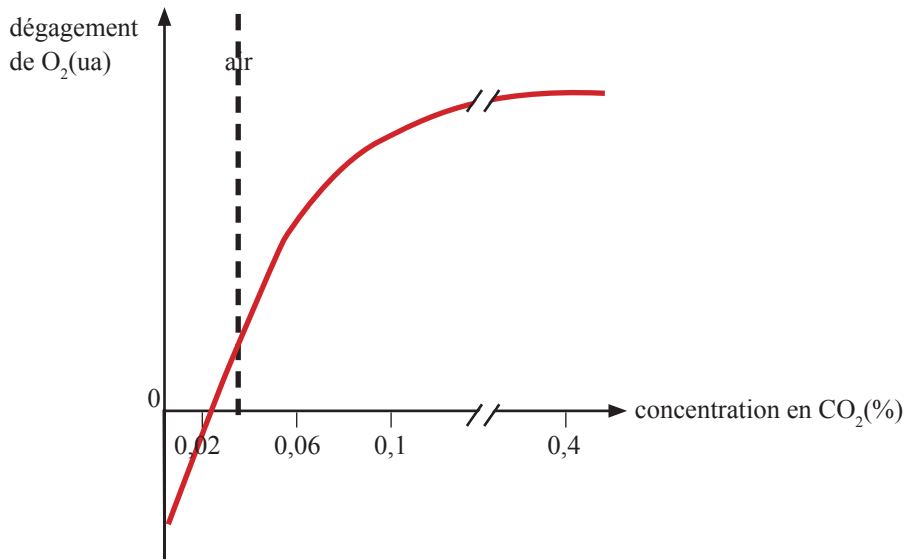


Document 35 :

importance du dégagement d'oxygène

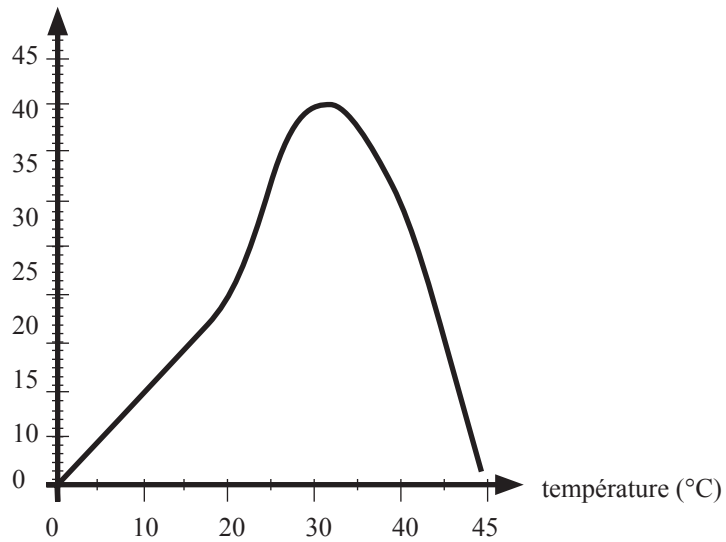


Document 36 :

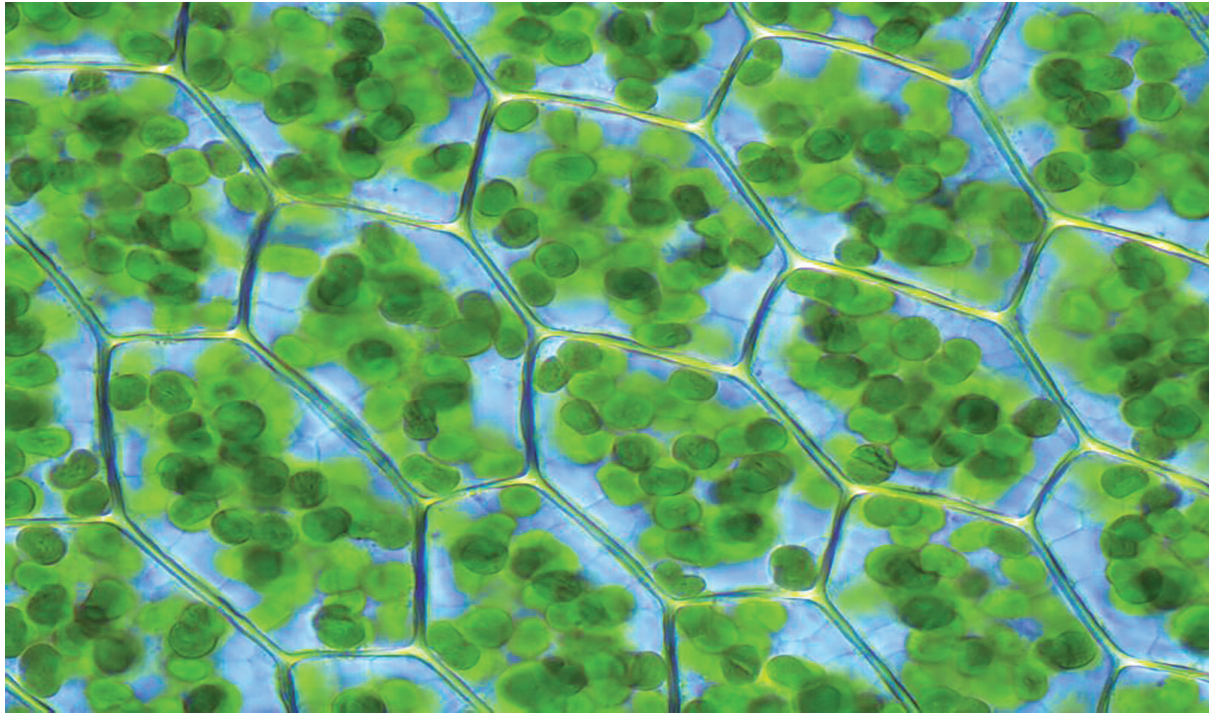


Document 37 :

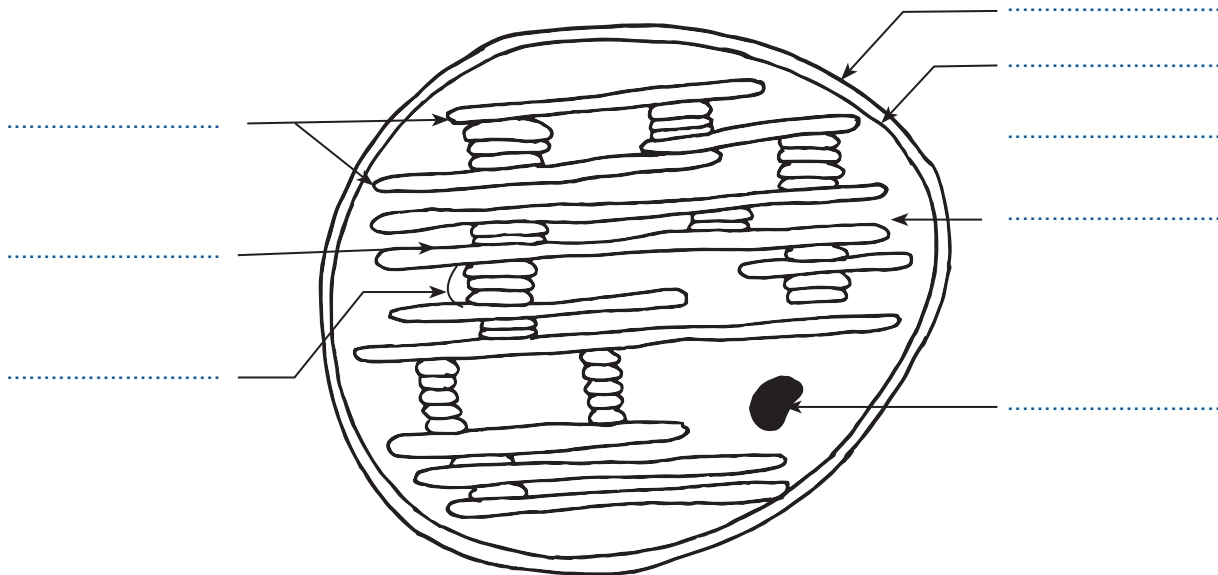
intensité photosynthétique
CO₂ absorbé en mm³



Document 38 :

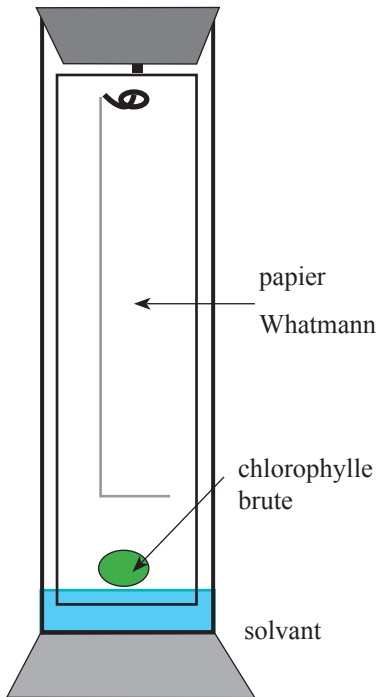


Document 39 :

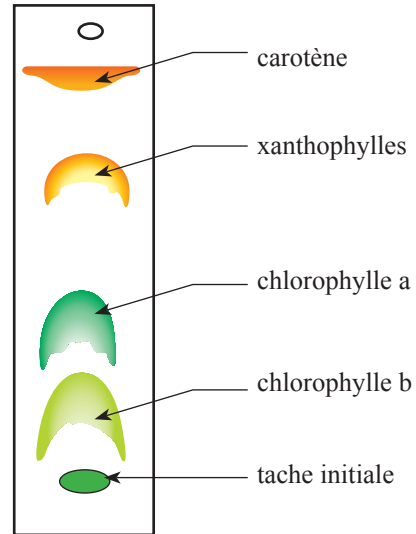


Document 40 :

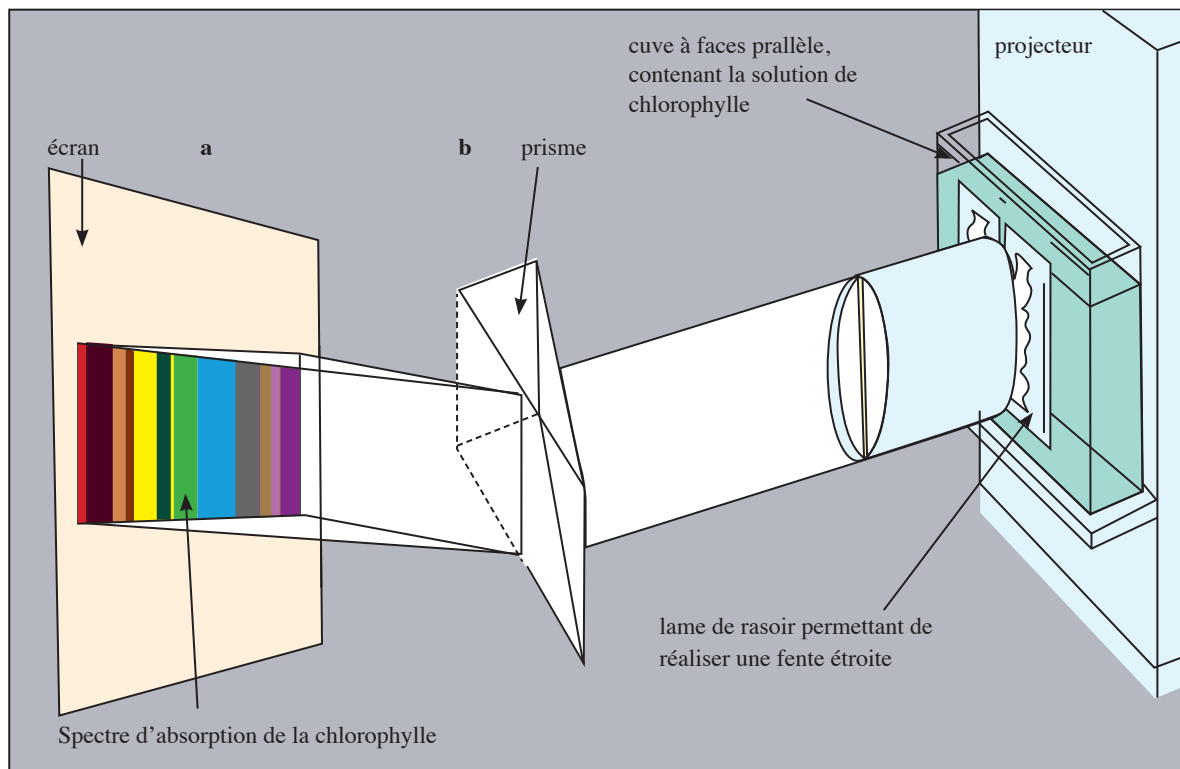
• Au départ



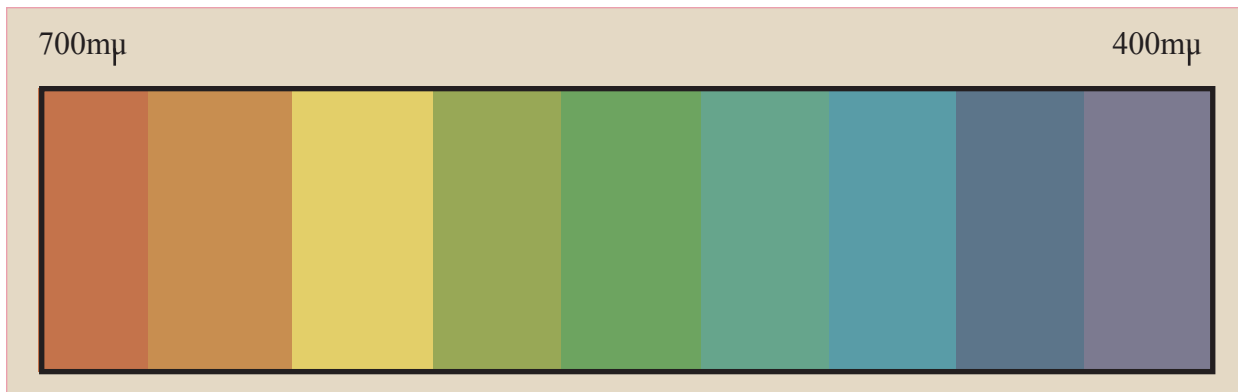
• 50 minutes plus tard



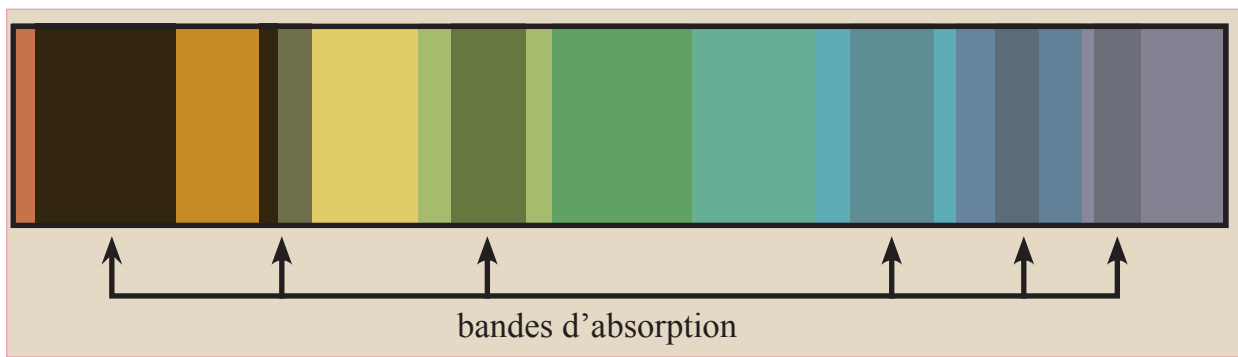
Document 41 :



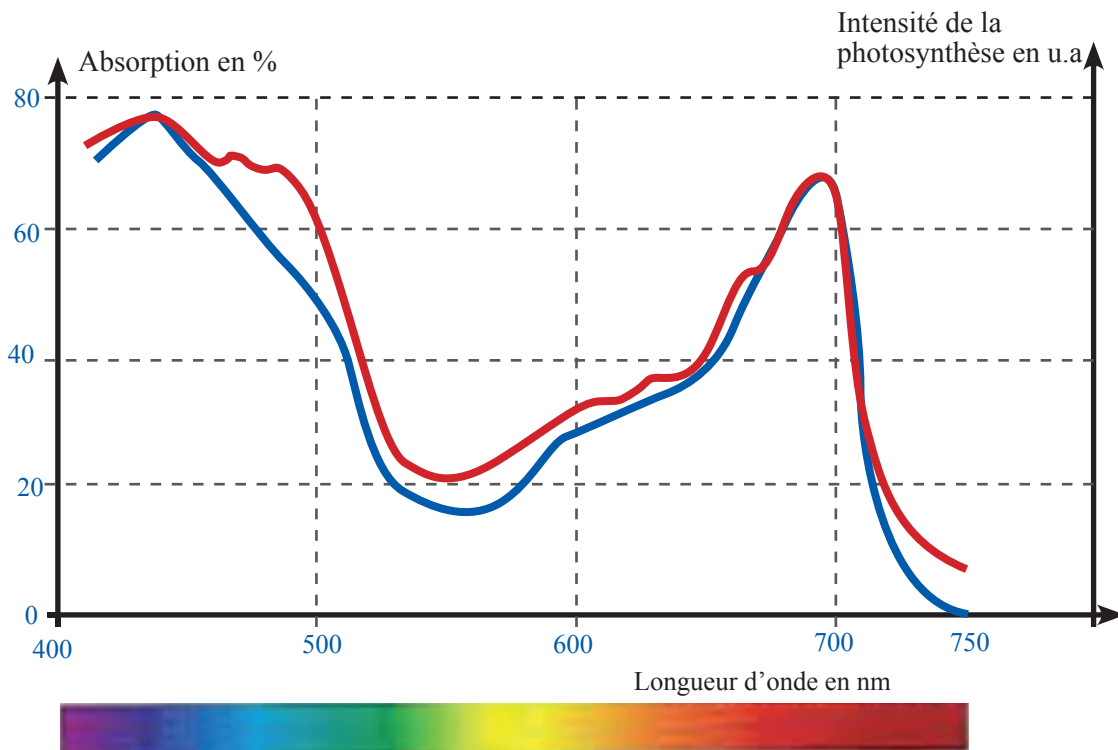
Document 42 :



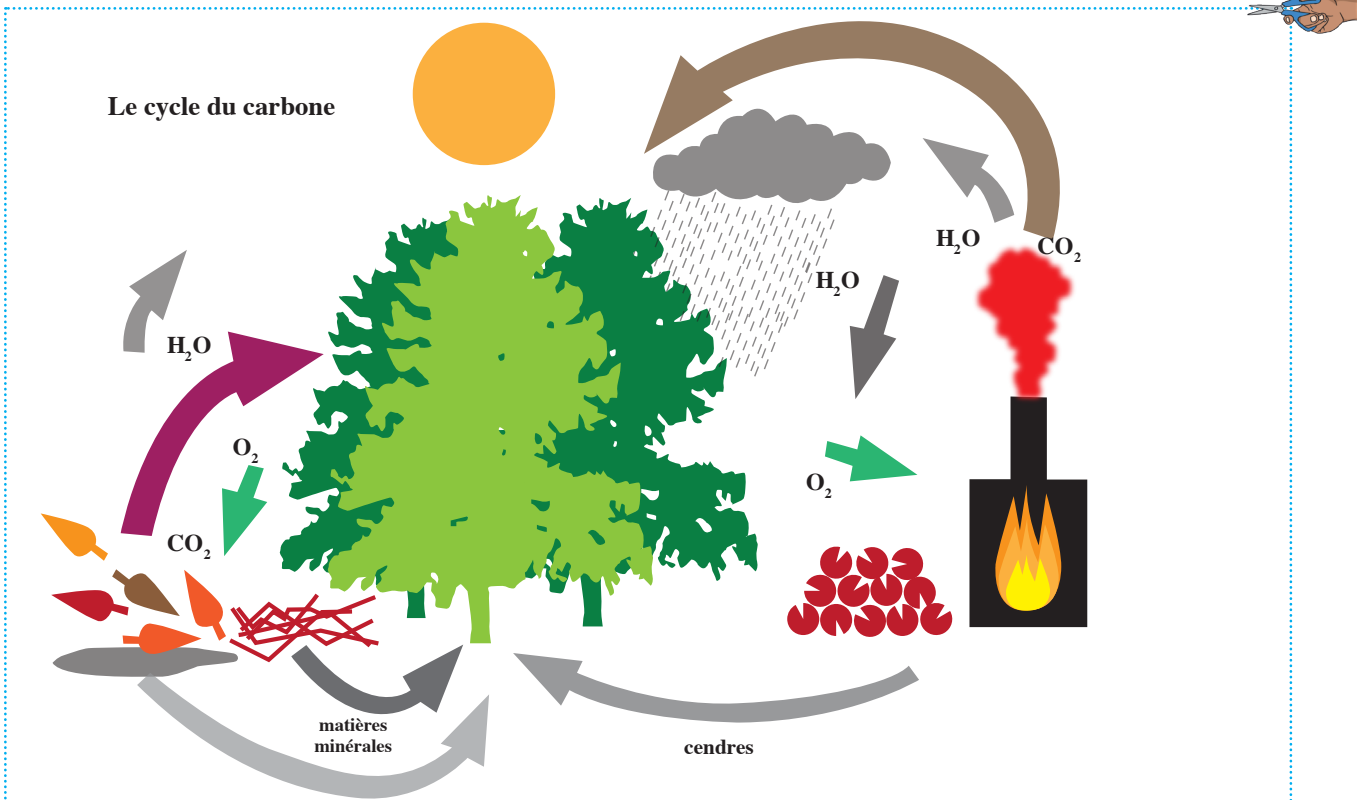
Document 42 :



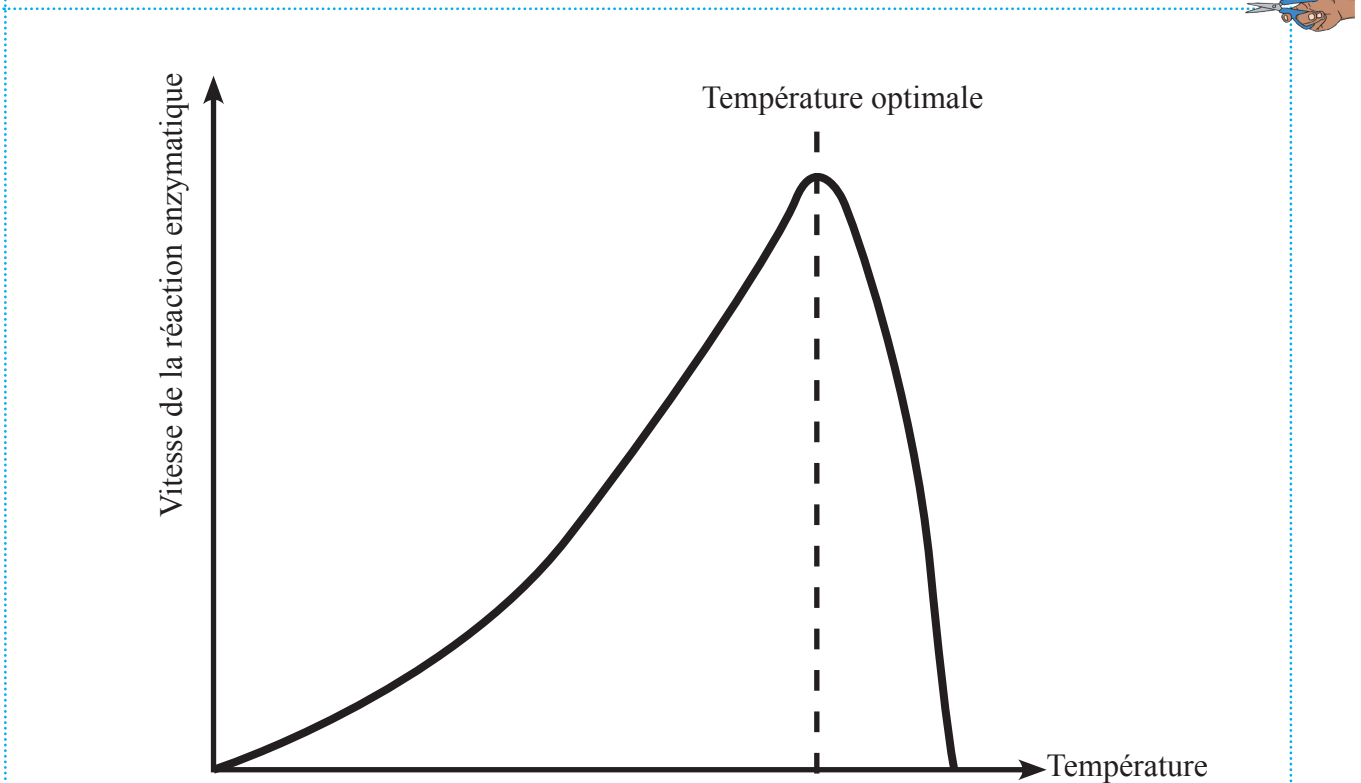
Document 44 :



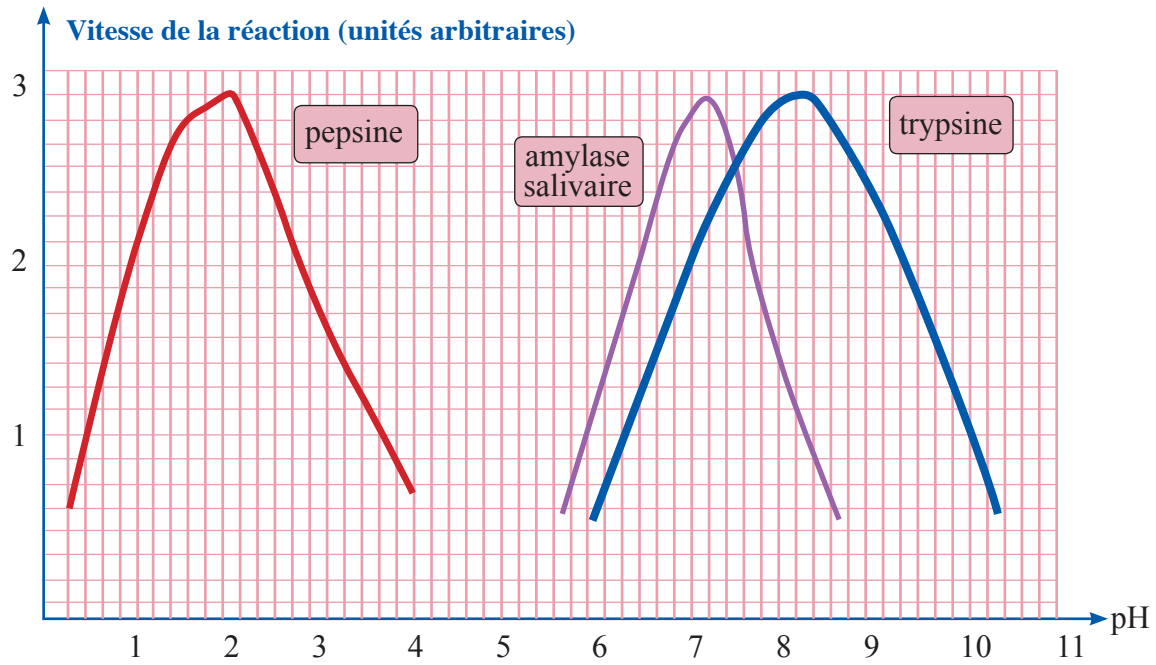
Document 45 :



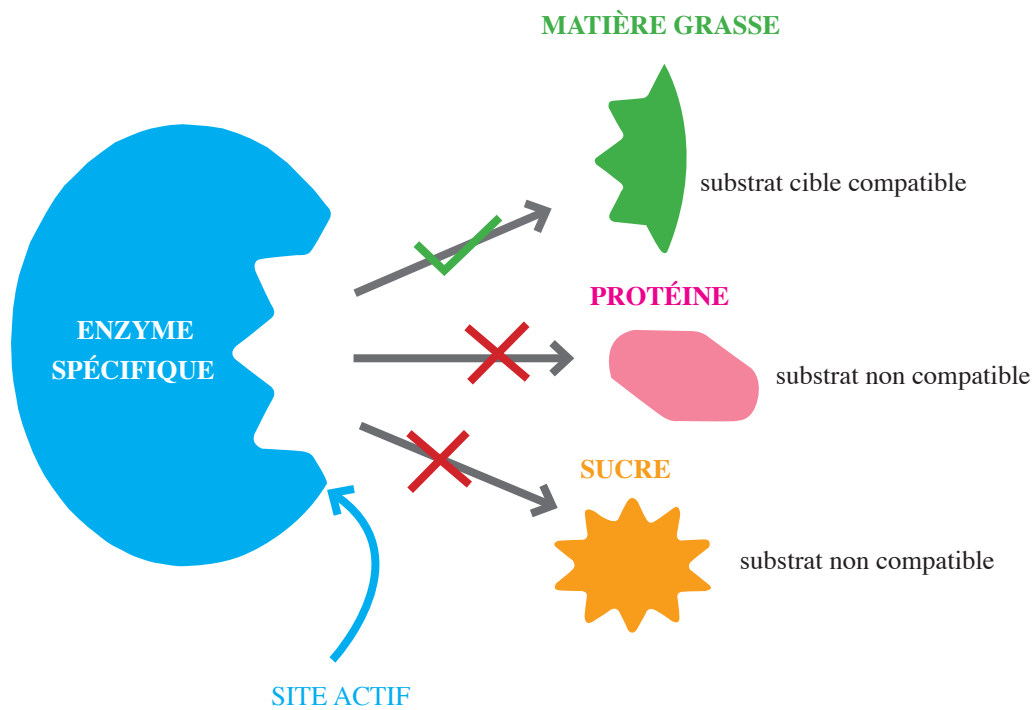
Document 46 :



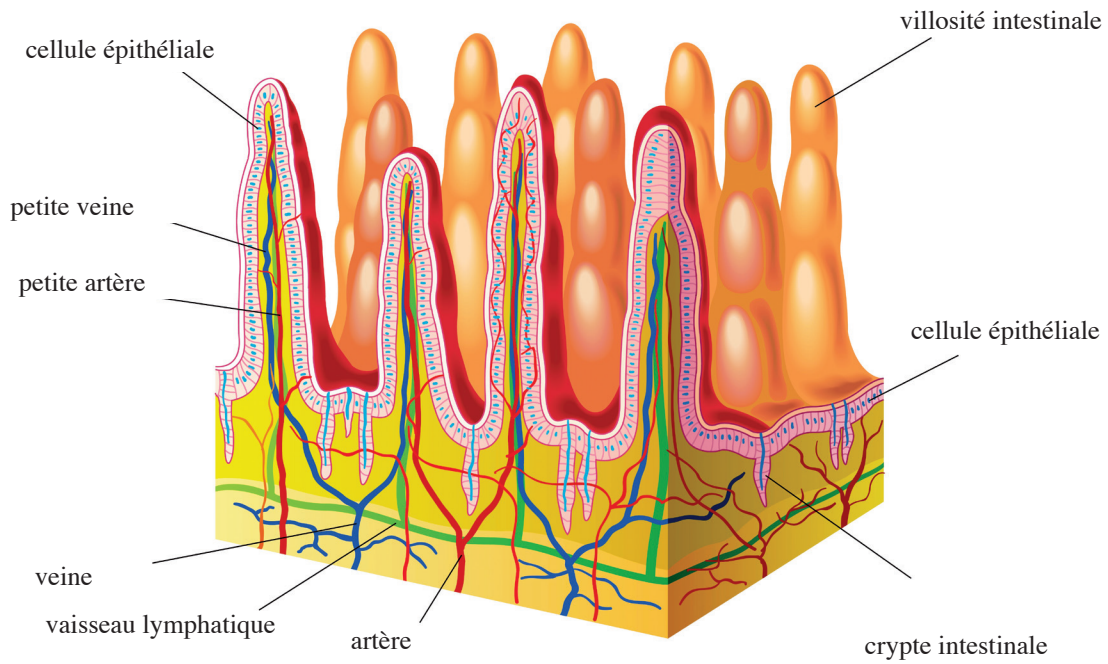
Document 47 :



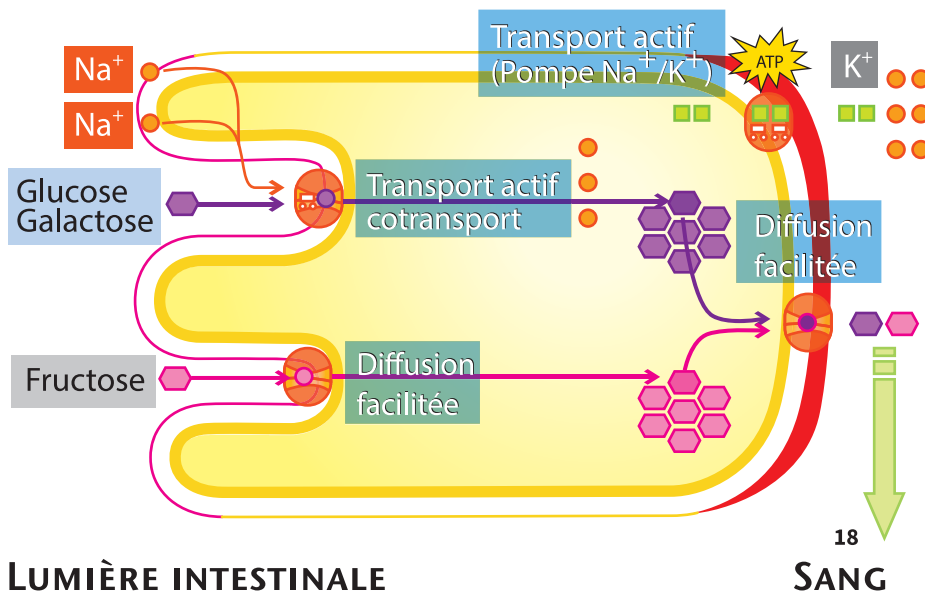
Document 48 :



Document 49 :



Document 50 :



Document 51 :