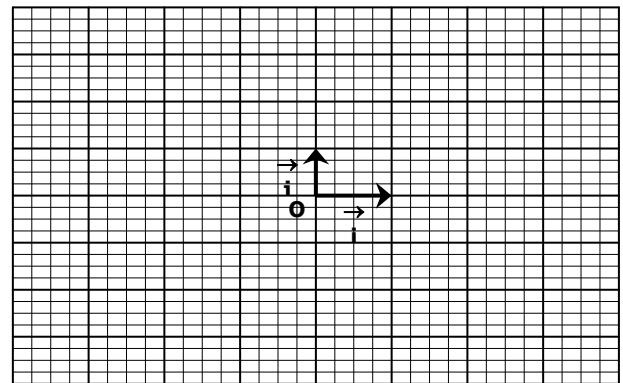
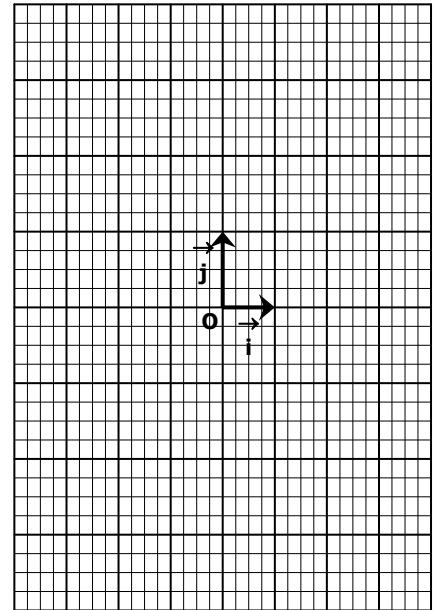
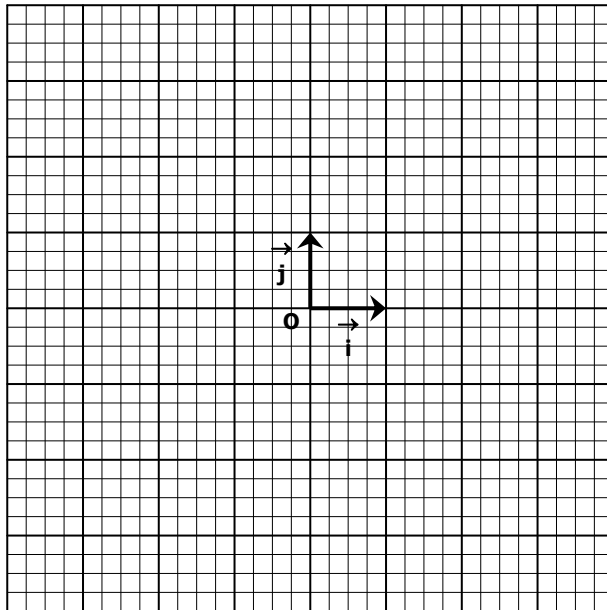


**EXERCICE 3B.1**

Dans chaque cas, tracer la courbe de la fonction  $f : x \mapsto \frac{1}{x}$  sur l'intervalle  $[-4 ; 0[ \cup ]0 ; 4]$ .

- On rappelle que  $f$  est impaire.
- On donne un tableau de valeurs de  $f$  :

$x$	0,2	0,5	1	2	4
$f(x)$	5				



**EXERCICE 3B.2**

a. Représenter dans ce repère orthonormal la fonction  $f : x \mapsto \frac{1}{x}$  sur l'intervalle  $[-4 ; 0[ \cup ]0 ; 4]$ .

b. Résoudre graphiquement sur l'intervalle  $[-4 ; 0[ \cup ]0 ; 4]$  les équations et inéquations suivantes :

$f(x) = -2 \rightarrow S =$

$f(x) = 0 \rightarrow S =$

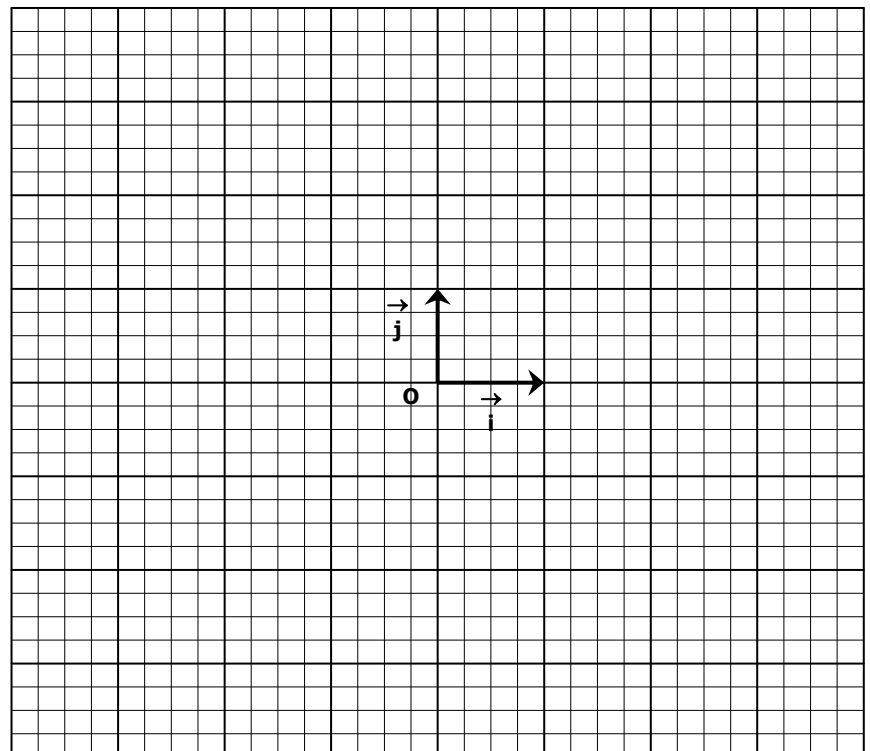
$f(x) \geq 2 \rightarrow S =$

$f(x) < \frac{1}{4} \rightarrow S =$

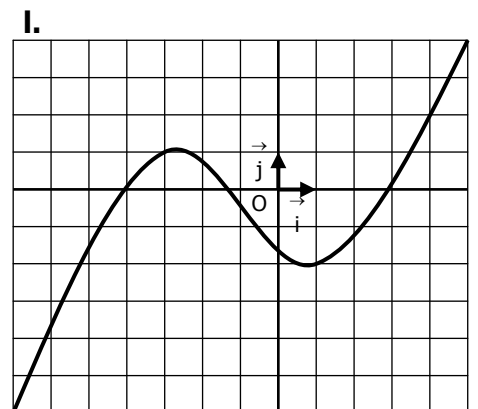
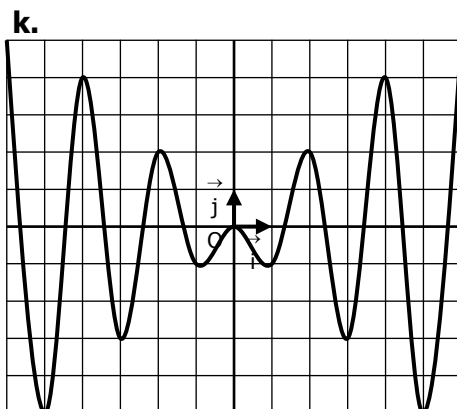
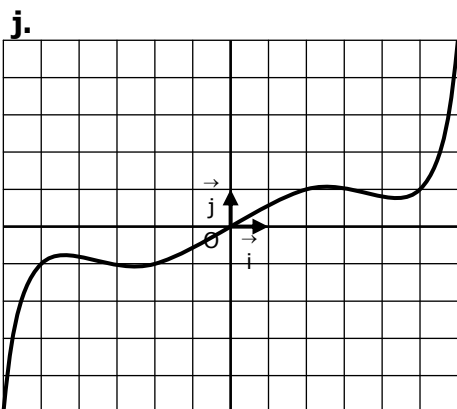
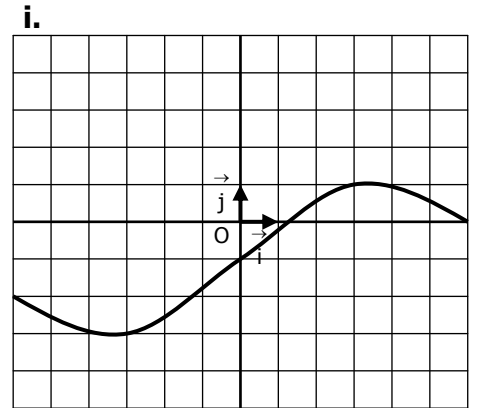
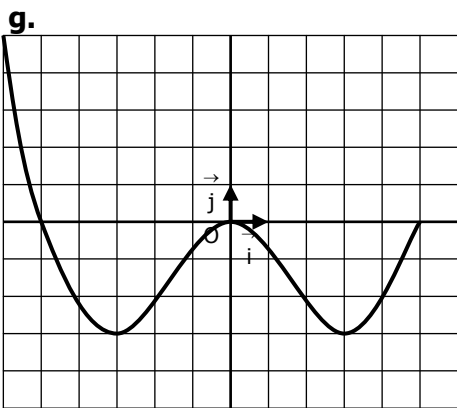
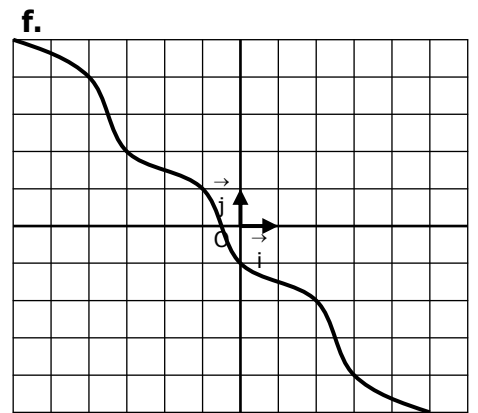
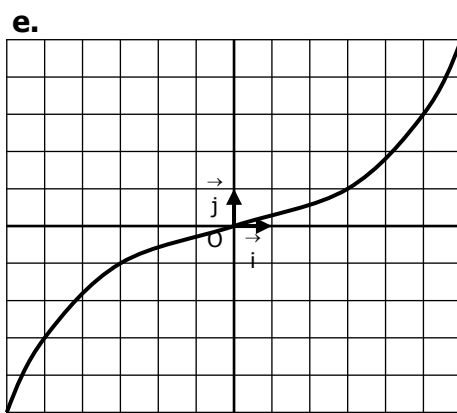
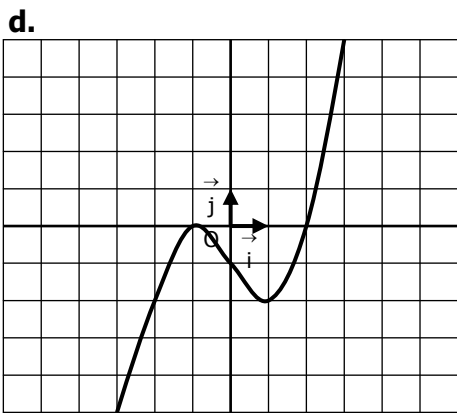
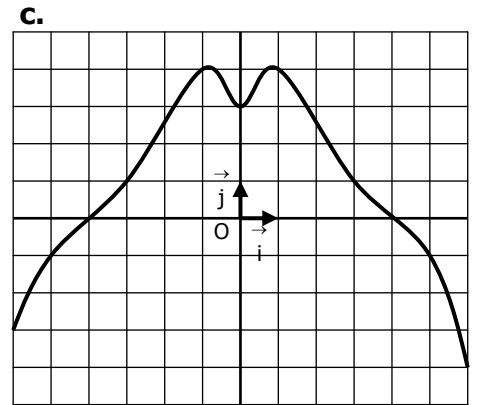
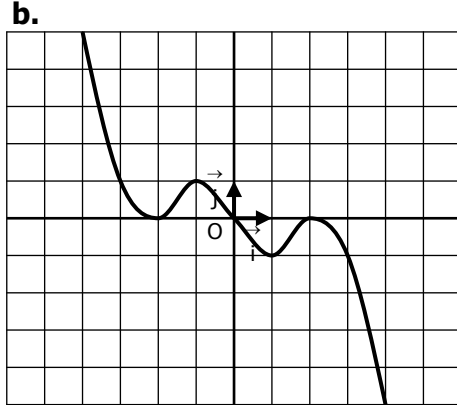
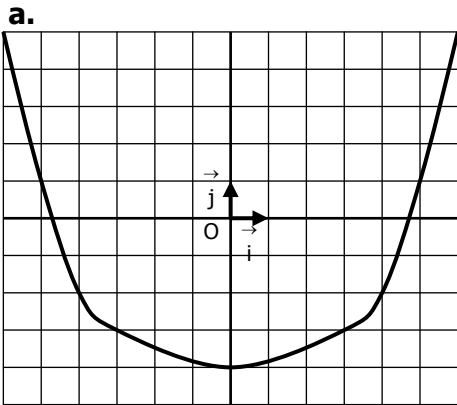
c. Déterminer graphiquement des approximations de la/des solution/s des équations suivantes :

$f(x) = 3 \rightarrow S \approx$

$f(x) = -0,75 \rightarrow S \approx$

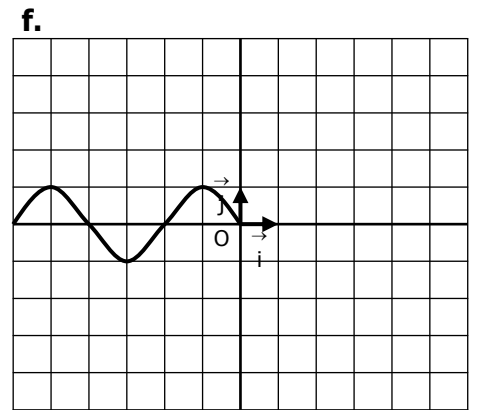
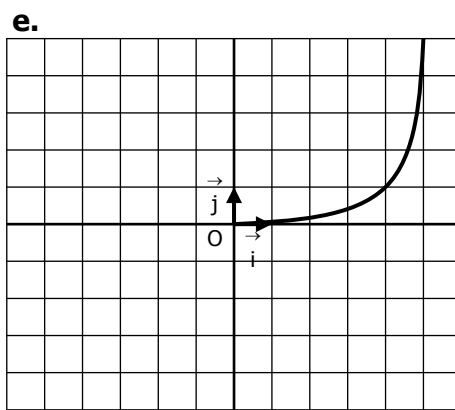
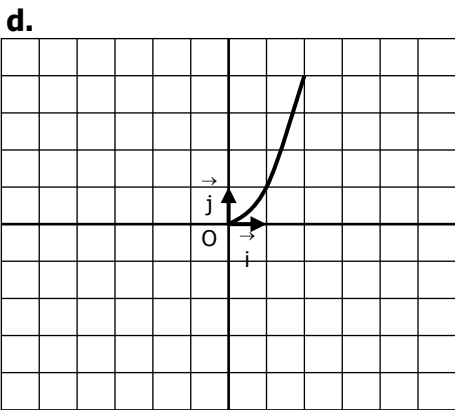
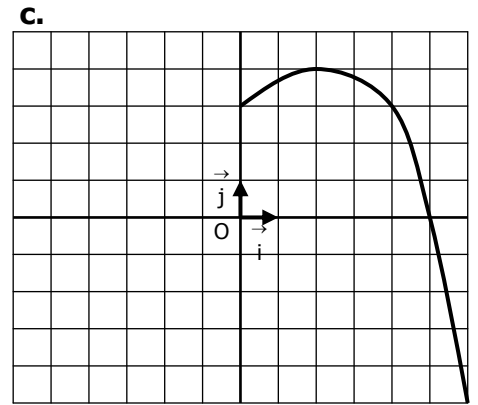
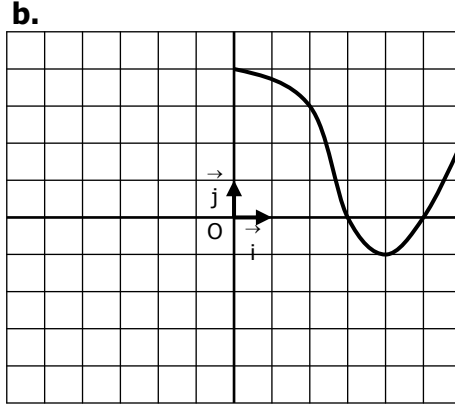
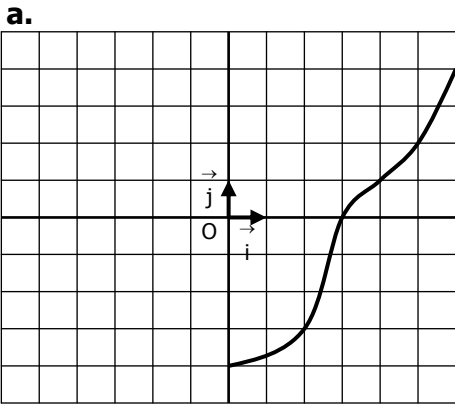


Parmi les fonctions suivantes, retrouver celles qui sont **paires**, celles qui sont **impaires**, et celles qui ne sont **ni paires ni impaires** :



**EXERCICE 3E.1**

Les fonctions suivantes sont **paires**. Compléter leur représentation graphique.



**EXERCICE 3E.2**

Les fonctions suivantes sont **impaires**. Compléter leur représentation graphique.

